



*jordan fishwick*

Woodlands Road Chapel-En-Le-Frith



## Woodlands Road Chapel-En-Le-Frith SK23 0XR

£249,950



### The Property

Located on a quiet no through road within an established and popular residential area, a stunning two double bedroom, semi-detached home. Suitable for many types of buyers and boasting two driveways, a single garage and wrap around garden. Superbly presented and comprising: entrance porch, hall, living room, re-fitted kitchen with integrated appliances, conservatory, two good sized first floor bedrooms (smallest 9'9 x 8'0) and a contemporary re-fitted bathroom. Pvc double glazing and gas central heating. Viewing Essential.



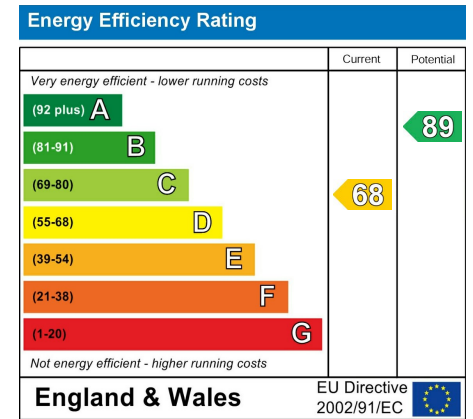
- Two Double Bedrooms
- Semi-Detached Home
- Quiet Popular Location
- Superb Condition
- Potential to Extend
- Two Driveways, Garage and Corner Garden
- Additional Conservatory
- Re-Fitted Kitchen and Bathroom

**Postcode** SK23 0XR

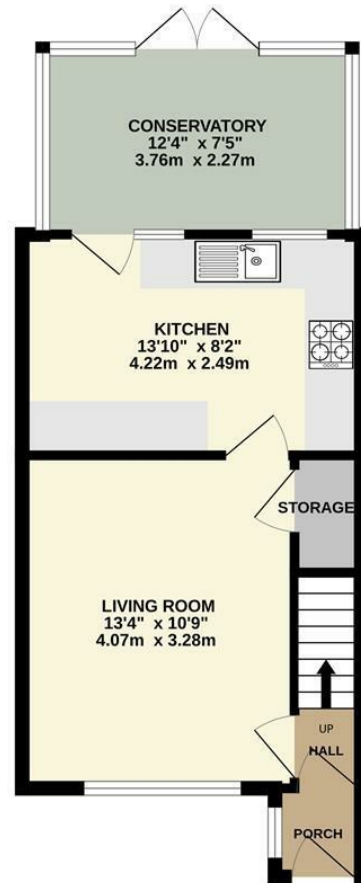
**EPC Rating** D

**Local Authority** High Peak

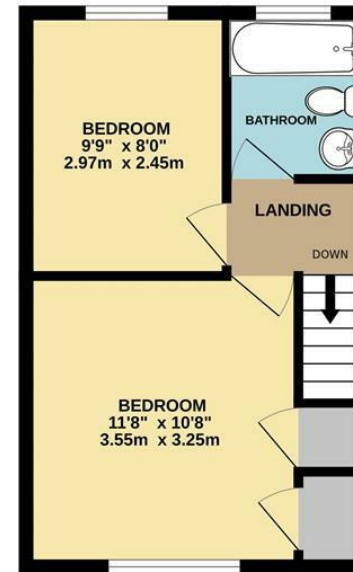
**Council Tax** B



GROUND FLOOR



1ST FLOOR



Whilst every attempt has been made to ensure the accuracy of the floorplan contained here, measurements of doors, windows, rooms and any other items are approximate and no responsibility is taken for any error, omission or mis-statement. This plan is for illustrative purposes only and should be used as such by any prospective purchaser. The services, systems and appliances shown have not been tested and no guarantee as to their operability or efficiency can be given.  
Made with Metropix ©2023



These particulars are believed to be accurate but they are not guaranteed and do not form a contract. Neither Jordan Fishwick nor the vendor or lessor accept any responsibility in respect of these particulars, which are not intended to be statements or representations of fact and any intending purchaser or lessee must satisfy himself by inspection or otherwise as to the correctness of each of the statements contained in these particulars. Any floorplans on this brochure are for illustrative purposes only and are not necessarily to scale.

Offices at: Chorlton, Didsbury, Disley, Hale, Glossop, Macclesfield, Manchester Deansgate, Manchester Whitworth Street, New Mills, Sale, Wilmslow and Withington

14 Market Street, Disley, Cheshire, SK12 2AA

01663 76 78 78

disley@jordanfishwick.co.uk

www.jordanfishwick.co.uk