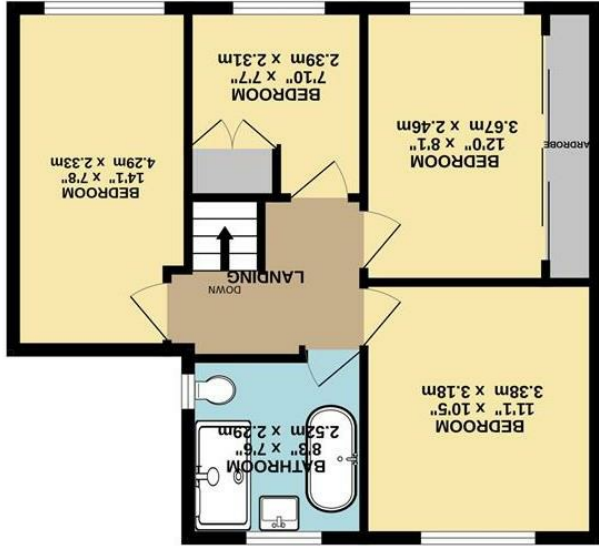


These particulars are believed to be accurate but they are not guaranteed and do not form a contract. Neither Jordan Fishwick nor the vendor or lessor accept any responsibility in respect of these particulars, which are not intended to be statements or representations of fact and any intending purchaser or lessee must satisfy himself by inspection or otherwise as to the correctness of each of the statements contained in these particulars. Any floorplans on this brochure are for illustrative purposes only and are not necessarily to scale.

Whilst every attempt has been made to ensure the accuracy of the floorplan contained here, measurements of doors, windows, rooms and any other items are approximate and no responsibility is taken for any error, omission or mis-statement. This plan is for illustrative purposes only and should be used as such by any prospective purchaser. The services, systems and appliances shown have not been tested and no guarantee as to their operation or efficiency can be given.
Made with Metropix ©2023



1ST FLOOR



GROUND FLOOR



12 Dystelegh Road, Disley,
Stockport, SK12 2BQ

£525,000



The Property

Commanding fantastic rear views towards Kinder Scout, a superb five bedroom detached home. Conveniently located for all of Disley's amenities, this extended, immaculately presented home has been upgraded and improved in recent years to provide a truly stunning family home. Versatile accommodation suitable for multi-generation occupation with a ground floor bedroom suite. Also comprising: entrance hall, wc, living room, sitting room, open plan living dining kitchen with bi-fold doors, four first floor bedrooms and a re-fitted luxury bathroom. Double driveway parking and well maintained gardens. Viewing essential



- Amazing Views
- Sought After Location
- Convenient Position
- Five Bedroom Detached
- Extended Accommodation
- Stunning Open Plan Kitchen
- Bi-Fold Doors
- Log Burning Stove
- Driveway and Gardens

Postcode - SK12 2BQ
EPC Rating - D
Local Authority - Cheshire East
Council Tax - D

