



Jordan fishwick

Canal Cottages Buxworth High Peak



Canal Cottages Buxworth High Peak SK23 7NF

Offers Over £320,000



The Property

Occupying a delightful position overlooking the Peak Forest Canal close to Buxworth, a superb, three double bedroom, double fronted, stone built end of terrace. Originally two cottages and recently redecorated and re-carpeted, this well presented, spacious home is sure to impress. Full of charm and character, offered for sale with no chain and comprising: entrance porch, living room with wood burning stove, dining room, rear porch, re-fitted kitchen, separate sitting room, three first floor bedrooms (one with shower and wash hand basin) and a family bathroom. Gas central heating, private gardens and parking by arrangement.



- Off The Beaten Track
- On The Peak Forest Canal
- Idyllic Location
- Three Double Bedrooms
- Three Reception Rooms
- Re-Fitted Kitchen
- Very Well Presented
- Private Gardens
- Parking By Arrangement
- No Chain

Postcode SK23 7NF

EPC Rating D

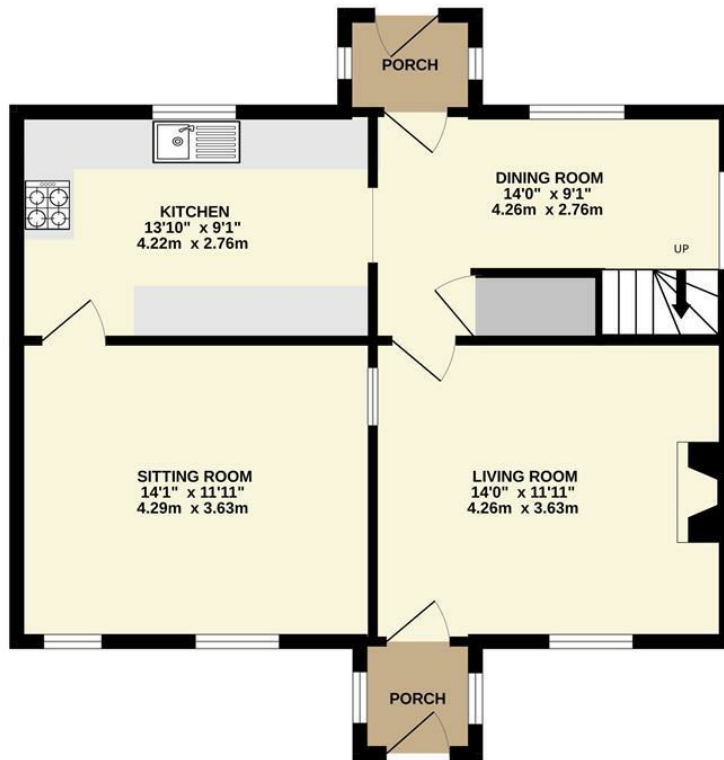
Local Authority High Peak Borough Council

Council Tax C

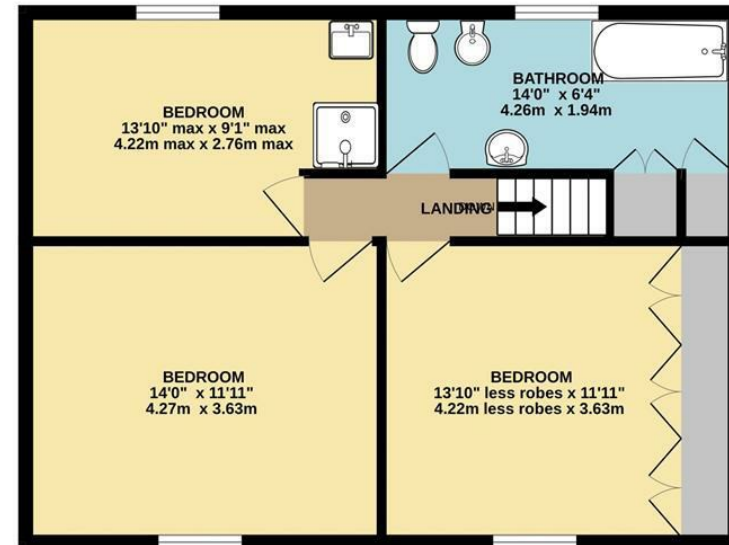
| Energy Efficiency Rating | | Current | Potential |
|---|--|-------------------------|-----------|
| Very energy efficient - lower running costs | | | 100 |
| (92 plus) A | | | |
| (81-91) B | | | |
| (69-80) C | | | |
| (55-68) D | | 57 | |
| (39-54) E | | | |
| (21-38) F | | | |
| (1-20) G | | | |
| Not energy efficient - higher running costs | | | |
| England & Wales | | EU Directive 2002/91/EC | |



GROUND FLOOR



1ST FLOOR



Whilst every attempt has been made to ensure the accuracy of the floorplan contained here, measurements of doors, windows, rooms and any other items are approximate and no responsibility is taken for any error, omission or mis-statement. This plan is for illustrative purposes only and should be used as such by any prospective purchaser. The services, systems and appliances shown have not been tested and no guarantee as to their operability or efficiency can be given.
Made with Metropix ©2024



These particulars are believed to be accurate but they are not guaranteed and do not form a contract. Neither Jordan Fishwick nor the vendor or lessor accept any responsibility in respect of these particulars, which are not intended to be statements or representations of fact and any intending purchaser or lessee must satisfy himself by inspection or otherwise as to the correctness of each of the statements contained in these particulars. Any floorplans on this brochure are for illustrative purposes only and are not necessarily to scale.

Offices at: Chorlton, Didsbury, Disley, Hale, Glossop, Macclesfield, Manchester Deansgate, Manchester Whitworth Street, New Mills, Sale, Wilmslow and Withington

14 Market Street, Disley, Cheshire, SK12 2AA

01663 76 78 78

disley@jordanfishwick.co.uk

www.jordanfishwick.co.uk