



Jordan fishwick

Ladypit Road Furness Vale High Peak



Ladypit Road Furness Vale High Peak SK23 7TD

£312,000



The Property

Adjoining open countryside with fantastic views and standing in a generous plot, a mature, stone built semi-detached property. Built as a three bedroom and now offering two double bedrooms, this spacious home is ideal for a multitude of buyers. Convenient for Furness Vale railway station whilst enjoying a semi-rural setting. Also comprising: entrance hall, 18ft living room, separate dining room, kitchen, first floor shower room and wc. Central heating and pvc double glazing. Driveway and 20ft detached garage. Viewing highly recommended and No Chain




- Built as a THREE Bed
- Surrounded By Countryside
- Stone Built Semi Detached
- Amazing Views
- Driveway and Large Garden
- Detached 20FT Garage
- Tremendous Potential
- No Chain
- Ideal For Furness Vale Station

Postcode SK23 7TD

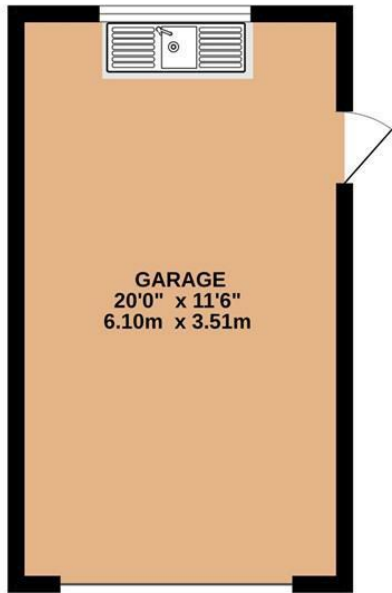
EPC Rating D

Local Authority High Peak

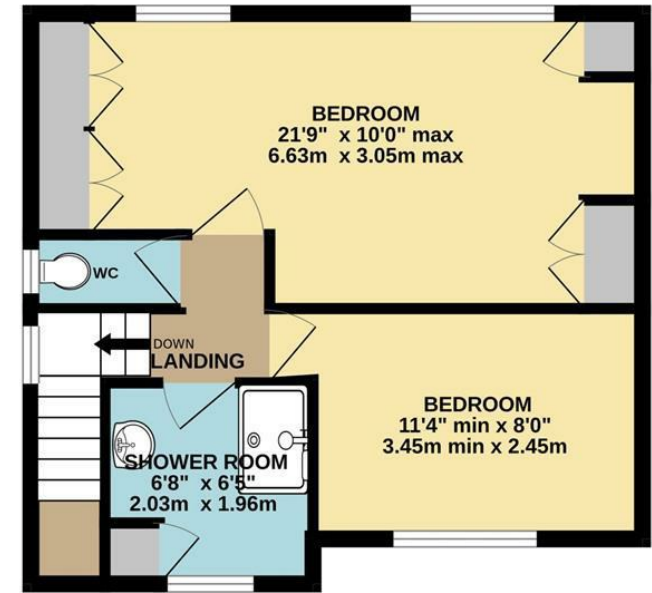
Council Tax C

Energy Efficiency Rating		Current	Potential
Very energy efficient - lower running costs			
(92 plus) A			
(81-91) B			
(69-80) C			76
(55-68) D		59	
(39-54) E			
(21-38) F			
(1-20) G			
Not energy efficient - higher running costs			
England & Wales		EU Directive 2002/91/EC 	





GROUND FLOOR



1ST FLOOR

Whilst every attempt has been made to ensure the accuracy of the floorplan contained here, measurements of doors, windows, rooms and any other items are approximate and no responsibility is taken for any error, omission or mis-statement. This plan is for illustrative purposes only and should be used as such by any prospective purchaser. The services, systems and appliances shown have not been tested and no guarantee as to their operability or efficiency can be given.
Made with Metropix ©2023



These particulars are believed to be accurate but they are not guaranteed and do not form a contract. Neither Jordan Fishwick nor the vendor or lessor accept any responsibility in respect of these particulars, which are not intended to be statements or representations of fact and any intending purchaser or lessee must satisfy himself by inspection or otherwise as to the correctness of each of the statements contained in these particulars. Any floorplans on this brochure are for illustrative purposes only and are not necessarily to scale.

Offices at: Chorlton, Didsbury, Disley, Hale, Glossop, Macclesfield, Manchester Deansgate, Manchester Whitworth Street, New Mills, Sale, Wilmslow and Withington

14 Market Street, Disley, Cheshire, SK12 2AA

01663 76 78 78

disley@jordanfishwick.co.uk

www.jordanfishwick.co.uk