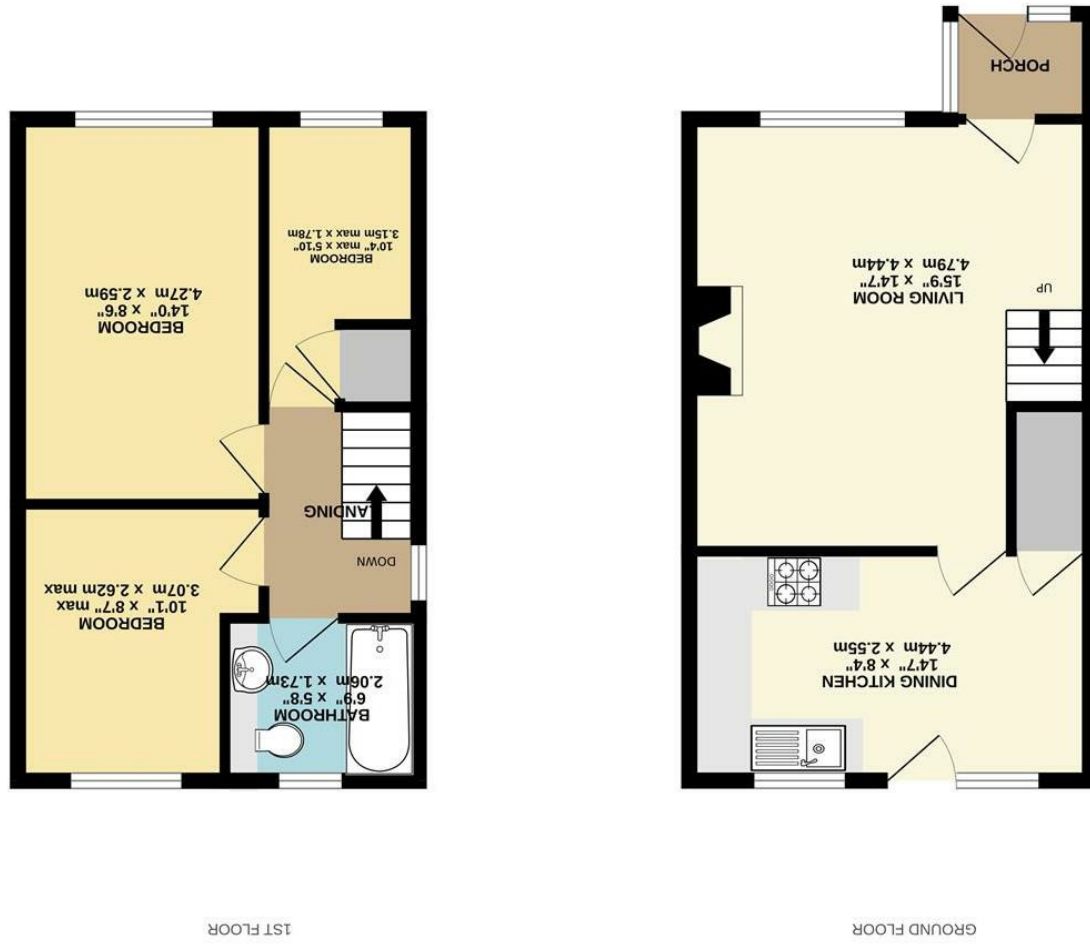


These particulars are believed to be accurate but they are not guaranteed and do not form a contract. Neither Jordan Fishwick nor the vendor or lessor accept any responsibility in respect of these particulars, which are not intended to be statements or representations of fact and any intending purchaser or lessee must satisfy himself by inspection or otherwise as to the correctness of each of the statements contained in these particulars. Any floorplans on this brochure are for illustrative purposes only and are not necessarily to scale.

While every attempt has been made to ensure the accuracy of the floorplan contained here, measurements of doors, windows, rooms and other items are approximate and no responsibility is taken for any error, omission or mis-statement. This plan is for illustrative purposes only and should be used as such by any prospective purchaser. The services, systems and appliances shown have not been tested and no guarantee as to their operability or efficiency can be given.
 Made with AutoCAD 2022



37 Woodlands Road, Chapel-En-Le-Frith, High Peak, SK23 0XR

£280,000



The Property

At the head of a cul-de-sac and backing onto playing fields with an open rear aspect, a modern three bedroom detached family home. Beautifully presented and potential to extend (subject to permission). Located on a quiet small residential development and ideally placed for schools and railways station. Comprising: entrance hall, living room, dining kitchen with Granite work surfaces, three first floor bedrooms and bathroom with contemporary suite and underfloor heating. Pvc double glazing, gas central heating, block paved driveway with parking for multiple cars and an enclosed good sized rear garden with views. Viewing highly recommended.



- Three Bedroom Detached Family Home
- Cul-de-sac Position
- Fabulous Views
- Backing onto Fields
- Potential To Extend (Subject to P/P)
- Convenient For Schools and Station
- Contemporary Refitted Kitchen and Bathroom With Underfloor Heating

Postcode - SK23 0XR
EPC Rating - C
Local Authority - High Peak
Council Tax - C

