



jordan fishwick

Green Lane Disley Stockport



Green Lane Disley Stockport SK12 2AL

Offers Over £125,000

The Property

Grazing land of approx 3.9 acres overlooking Lyme Park. Gated and fenced. Access from Green Lane Disley.

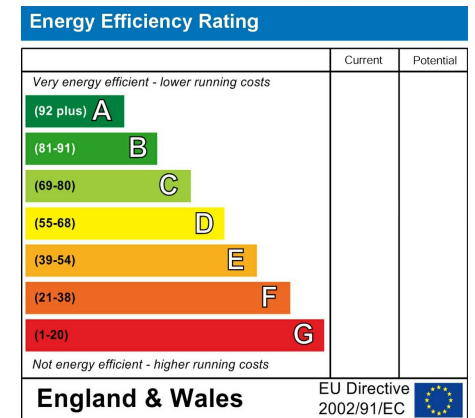


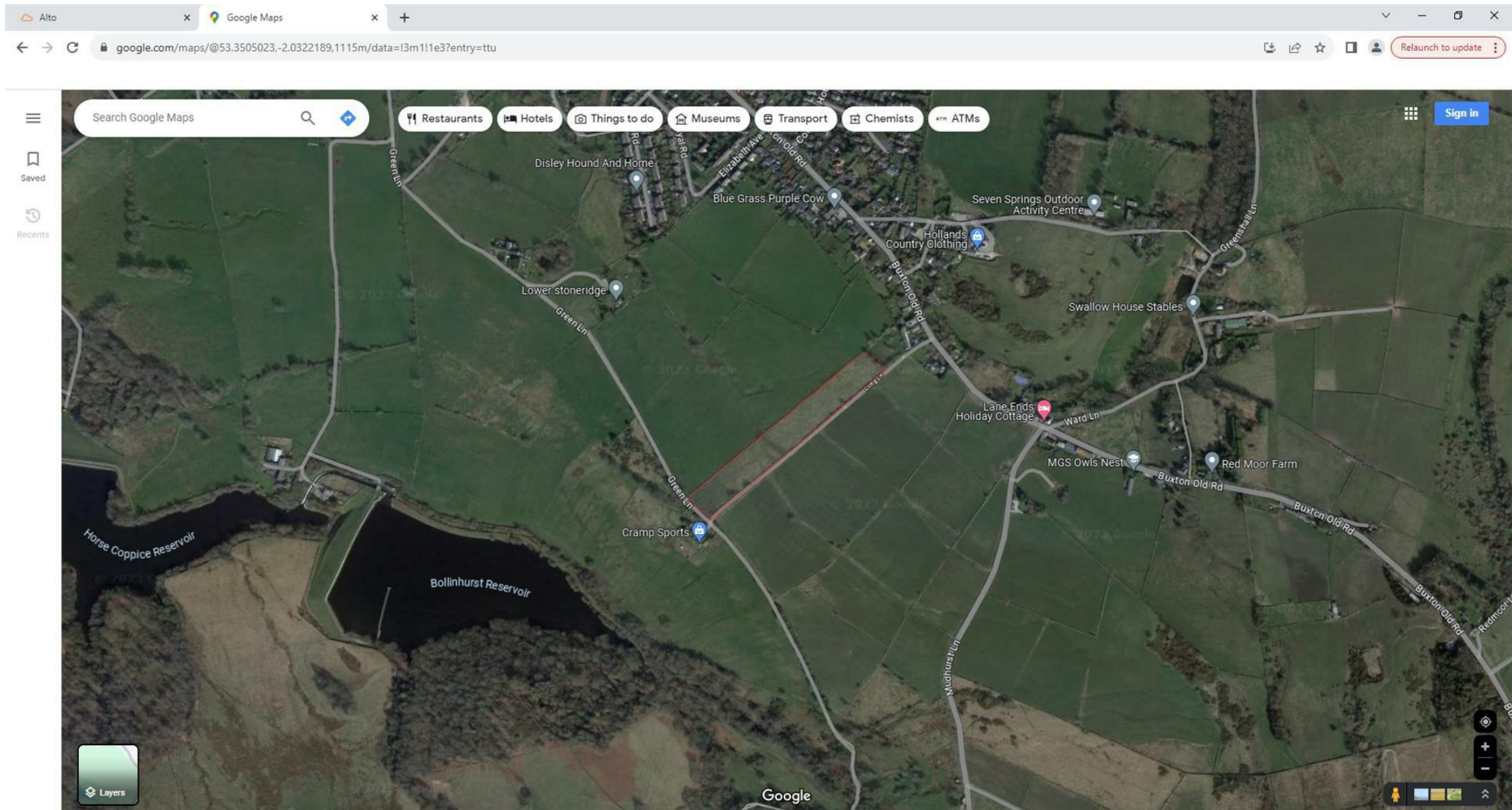
Postcode SK12 2AL

EPC Rating

Local Authority

Council Tax Exempt





These particulars are believed to be accurate but they are not guaranteed and do not form a contract. Neither Jordan Fishwick nor the vendor or lessor accept any responsibility in respect of these particulars, which are not intended to be statements or representations of fact and any intending purchaser or lessee must satisfy himself by inspection or otherwise as to the correctness of each of the statements contained in these particulars. Any floorplans on this brochure are for illustrative purposes only and are not necessarily to scale.

Offices at: Chorlton, Didsbury, Disley, Hale, Glossop, Macclesfield, Manchester Deansgate, Manchester Whitworth Street, New Mills, Sale, Wilmslow and Withington

14 Market St, Disley, Cheshire, Stockport SK12 2AA

01663 767878

disley@jordanfishwick.co.uk
www.jordanfishwick.co.uk