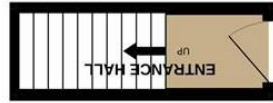
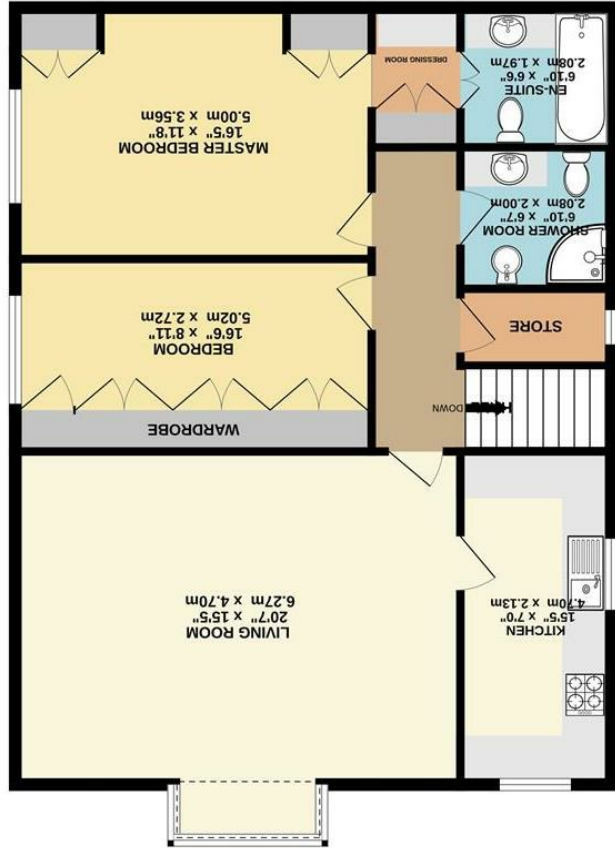


Whilst every attempt has been made to ensure the accuracy of the information contained here, measurements of doors, windows, cornices and any other items are approximate and no responsibility is taken for any error. The services, fixtures and appliances shown have not been tested and no guarantee as to their operation or efficiency can be given. This plan is for illustrative purposes only and should be used as such by any prospective purchaser. The services, fixtures and appliances shown have not been tested and no guarantee as to their operation or efficiency can be given. Made with AutoCAD 2022



FIRST FLOOR

GROUND FLOOR



23 4 Red Lodge, Buxton Road
West, Disley, Stockport, SK12

2L V

£415,000



The Property

Red Lodge is a select development of six purpose built executive apartments with breathtaking views across Lyme Park. Situated in a convenient location with access to Disley and High Lane. This exclusive development must be viewed to appreciate the versatile accommodation and tranquil grounds. Conveniently accessed via a private ground floor entrance leading to a generous first floor hallway. Four Red Lodge is a spacious, first floor apartment, comprising of 20ft x 15ft living room with picture window offering panoramic views, fitted breakfast kitchen, additional utility area, TWO DOUBLE BEDROOMS, the master bedroom benefiting from a private dressing area and en-suite bathroom plus an additional shower room. Well presented throughout and boasting off road parking together with a single garage. Offers Considered.



- Breathtaking Views
- Overlooking Lyme Park
- Exclusive First Floor Apartment
- Part of a Select Development of Only Six Apartments
- Offers Considered
- Two Large Double Bedrooms
- 20ft Living Room
- Garage, Parking and Communal Grounds
- Useful Large Attic Storage

Postcode - SK12 2LY
EPC Rating - C
Local Authority - Cheshire East
Council Tax - E

