



*jordan fishwick*

Crabtree Avenue Disley Stockport



## Crabtree Avenue Disley Stockport SK12 2DD

£595,000



### The Property

Occupying an enviable position with the most delightful views towards Kinder Scout, a superb and vastly improved three/four bedroom detached bungalow. Tucked away and standing in generous private grounds within an established and sought after location in Disley, this stunning property has to be viewed. High quality throughout and comprising: entrance porch, hallway, open plan lounge and dining room, conservatory, re-fitted contemporary breakfast kitchen, study, separate wc and rear porch, three double bedrooms with fitted wardrobes and a luxuriously appointed bathroom with shower. Sweeping driveway, detached 20ft garage and enclosed southerly facing gardens.




- Fabulous Views
- Generous Immaculate Grounds
- Private Position
- Sought After Location
- Three Bedrooms Plus Study
- High Quality Throughout
- Detached Bungalow
- Contemporary Kitchen
- Luxury Bathroom
- Sweeping Driveway and Detached Garage

**Postcode** SK12 2DD

**EPC Rating** D

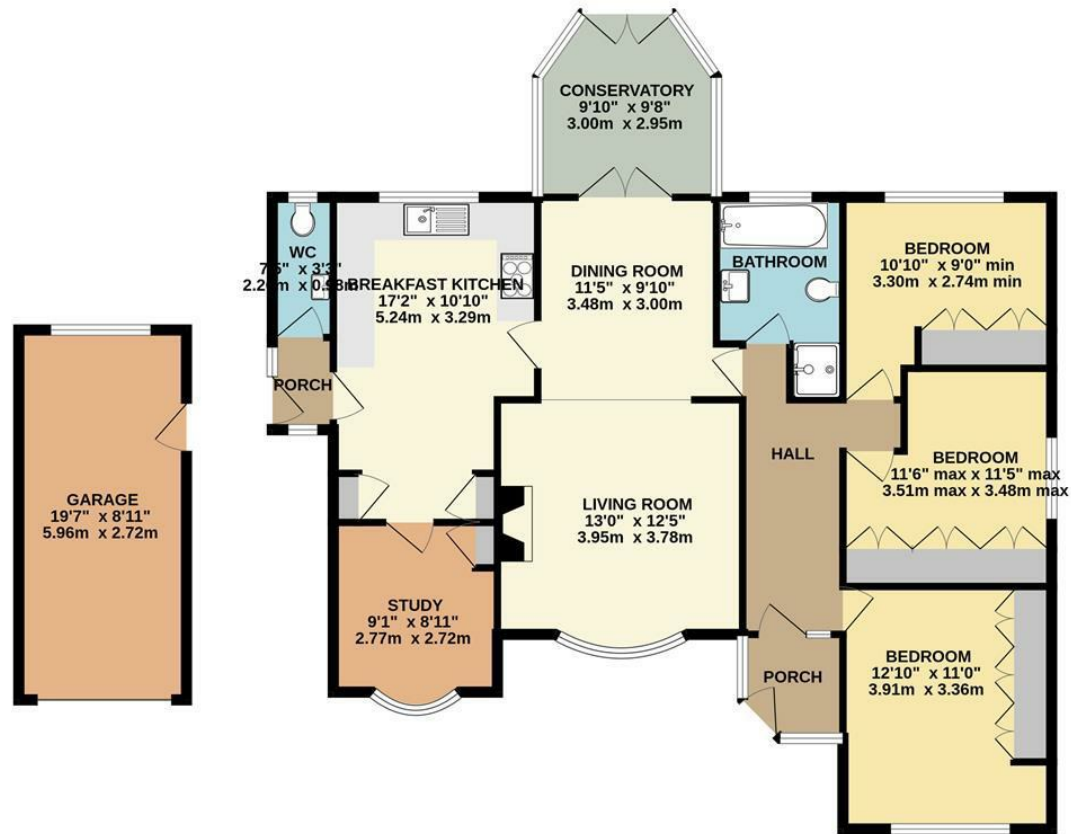
**Local Authority** Cheshire East

**Council Tax** D

Energy Efficiency Rating		
	Current	Potential
Very energy efficient - lower running costs		
(92 plus) <b>A</b>		
(81-91) <b>B</b>		<b>85</b>
(69-80) <b>C</b>	<b>67</b>	
(55-68) <b>D</b>		
(39-54) <b>E</b>		
(21-38) <b>F</b>		
(1-20) <b>G</b>		
Not energy efficient - higher running costs		
<b>England &amp; Wales</b>	EU Directive 2002/91/EC 	



## GROUND FLOOR



Whilst every attempt has been made to ensure the accuracy of the floorplan contained here, measurements of doors, windows, rooms and any other items are approximate and no responsibility is taken for any error, omission or mis-statement. This plan is for illustrative purposes only and should be used as such by any prospective purchaser. The services, systems and appliances shown have not been tested and no guarantee as to their operability or efficiency can be given.  
Made with Metropix ©2023



These particulars are believed to be accurate but they are not guaranteed and do not form a contract. Neither Jordan Fishwick nor the vendor or lessor accept any responsibility in respect of these particulars, which are not intended to be statements or representations of fact and any intending purchaser or lessee must satisfy himself by inspection or otherwise as to the correctness of each of the statements contained in these particulars. Any floorplans on this brochure are for illustrative purposes only and are not necessarily to scale.

Offices at: Chorlton, Didsbury, Disley, Hale, Glossop, Macclesfield, Manchester Deansgate, Manchester Whitworth Street, New Mills, Sale, Wilmslow and Withington

14 Market Street, Disley, Cheshire, SK12 2AA

01663 76 78 78

disley@jordanfishwick.co.uk

www.jordanfishwick.co.uk