



jordan fishwick

Buxton Old Road Disley Disley

**Buxton Old Road Disley Disley
SK12 2BB**

Offers Over £550,000



The Property

Standing in a prominent corner plot close to the heart of Disley Village, an iconic bay fronted detached bungalow. Improved and remodelled to provide spacious accommodation with a first floor suite and potential for further conversion. High quality fittings throughout and comprising: entrance hall, 18ft living room with fabulous bay window, 20ft contemporary dining kitchen with island unit, separate dining room/bedroom, conservatory, double bedroom and shower room, first floor bedrooms suite with fitted wardrobes and en-suite shower room. Pvc double glazing and gas central heating. Lovely gardens, off road parking and a 22ft detached garage. Viewing highly recommended.



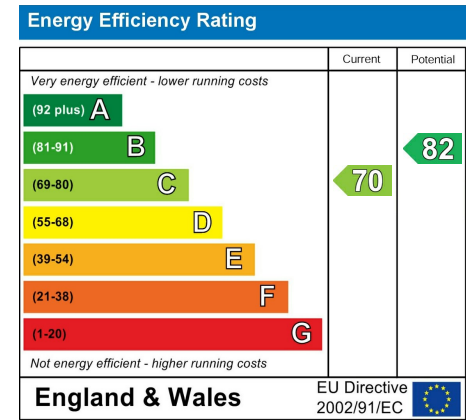
- Stunning 16ft Bay Window
- Superbly Presented
- Detached Bungalow
- Close to Disley Village Centre
- Corner Plot
- Conservatory
- 22ft Garage and Driveway
- First Floor Bedroom Suite
- Viewing Essential

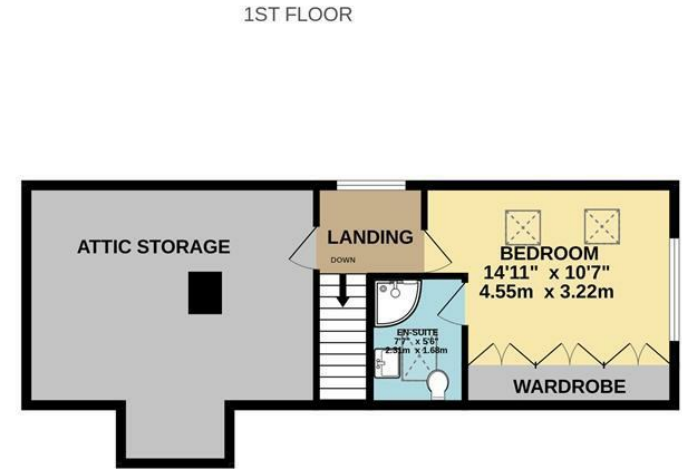
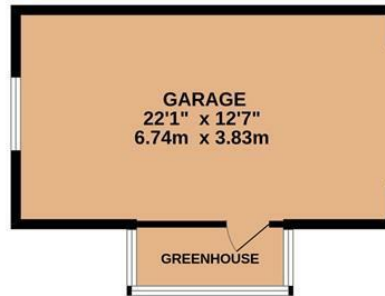
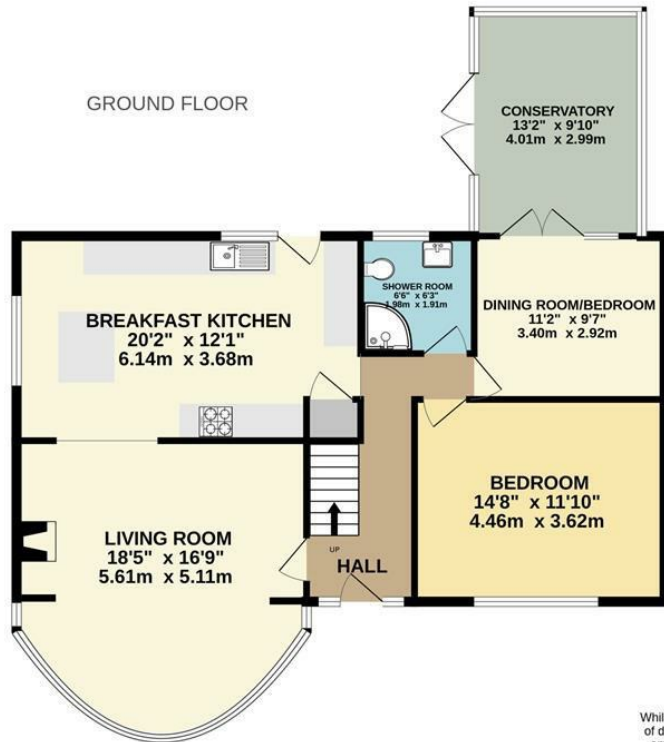
Postcode SK12 2BB

EPC Rating C

Local Authority Cheshire East

Council Tax F





Whilst every attempt has been made to ensure the accuracy of the floorplan contained here, measurements of doors, windows, rooms and any other items are approximate and no responsibility is taken for any error, omission or mis-statement. This plan is for illustrative purposes only and should be used as such by any prospective purchaser. The services, systems and appliances shown have not been tested and no guarantee as to their operability or efficiency can be given.
 Made with Metropix ©2023



These particulars are believed to be accurate but they are not guaranteed and do not form a contract. Neither Jordan Fishwick nor the vendor or lessor accept any responsibility in respect of these particulars, which are not intended to be statements or representations of fact and any intending purchaser or lessee must satisfy himself by inspection or otherwise as to the correctness of each of the statements contained in these particulars. Any floorplans on this brochure are for illustrative purposes only and are not necessarily to scale.

Offices at: Chorlton, Didsbury, Disley, Hale, Glossop, Macclesfield, Manchester Deansgate, Manchester Whitworth Street, New Mills, Sale, Wilmslow and Withington

14 Market Street, Disley, Cheshire, SK12 2AA

01663 76 78 78

disley@jordanfishwick.co.uk

www.jordanfishwick.co.uk