



jordan fishwick

Thornway High Lane Stockport



**Thornway High Lane Stockport
SK6 8EL**

Offers In Excess Of £500,000



The Property

*****WATCH THE VIDEO TOUR***** Finished to the highest of standards and located in a popular suburb in High Lane, a fabulous three bedroom detached bungalow. Updated and vastly improved in recent years and now providing spacious beautiful accommodation with immaculate private gardens. Comprising: entrance porch, hallway, 21ft x 17ft living room, 18ft conservatory with warm roof, stunning re-fitted kitchen with Quartz work tops, three bedrooms and luxury shower room. Situated behind a walled frontage showcasing a modern style with rendered exterior, feature lighting, light oak pvc cladding with matching windows and re-roof. Low maintenance private lawn gardens with concrete printed patios and driveway parking. Viewing essential. Energy rating Band F

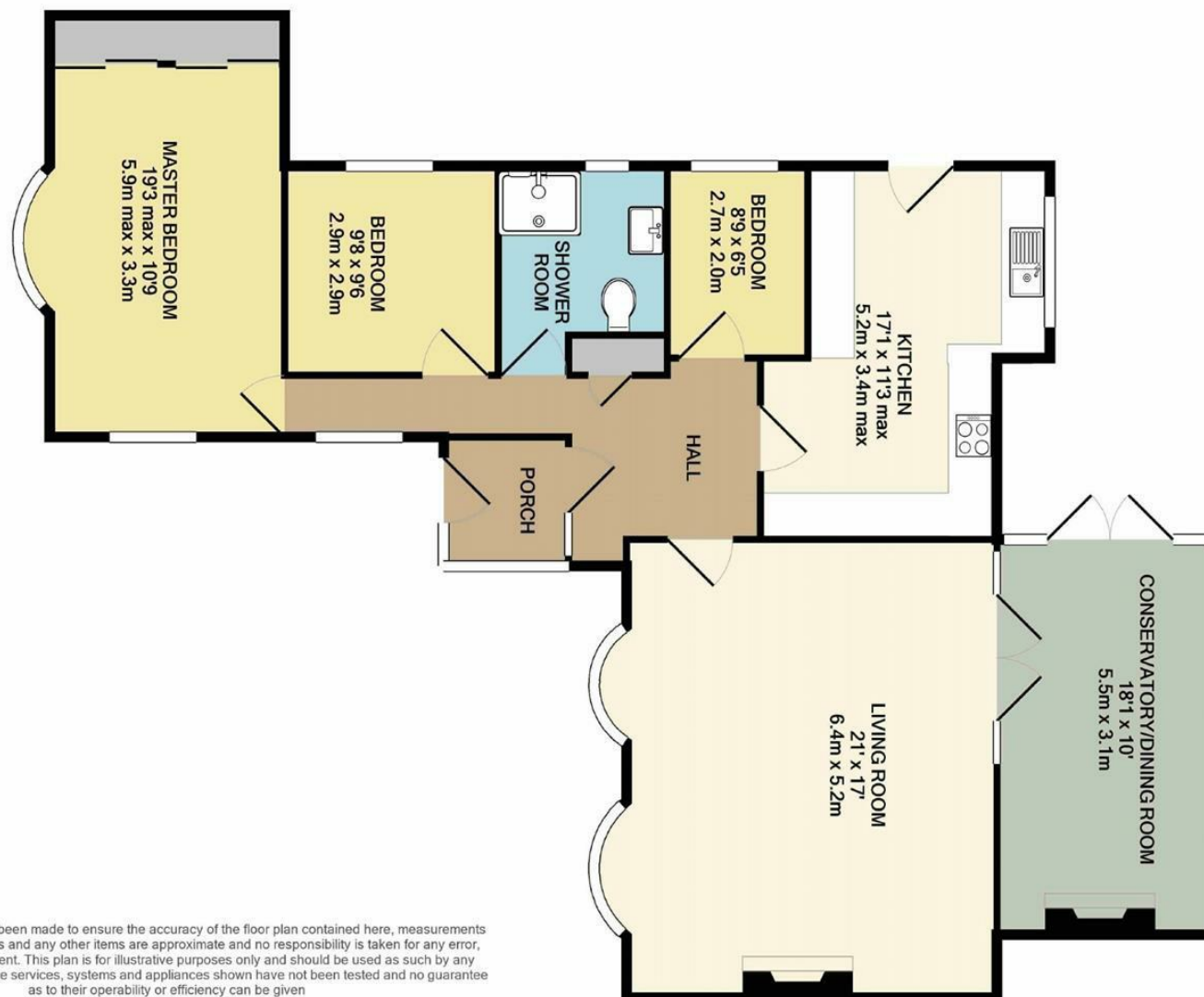


- Detached True Bungalow
- Enclosed Private Gardens
- Driveway and Garage
- Extensive Refurbishment Programme
- High Specification Throughout
- Sought After Location
- Contemporary Styling
- Three Bedrooms

Postcode SK6 8EL
EPC Rating
Local Authority Stockport
Council Tax D

Energy Efficiency Rating		
	Current	Potential
Very energy efficient - lower running costs		
(92 plus) A		
(81-91) B		
(69-80) C		
(55-68) D		
(39-54) E		
(21-38) F		
(1-20) G		
Not energy efficient - higher running costs		
England & Wales		EU Directive 2002/91/EC 





Whilst every attempt has been made to ensure the accuracy of the floor plan contained here, measurements of doors, windows, rooms and any other items are approximate and no responsibility is taken for any error, omission, or mis-statement. This plan is for illustrative purposes only and should be used as such by any prospective purchaser. The services, systems and appliances shown have not been tested and no guarantee as to their operability or efficiency can be given
Made with Metropix ©2021



These particulars are believed to be accurate but they are not guaranteed and do not form a contract. Neither Jordan Fishwick nor the vendor or lessor accept any responsibility in respect of these particulars, which are not intended to be statements or representations of fact and any intending purchaser or lessee must satisfy himself by inspection or otherwise as to the correctness of each of the statements contained in these particulars. Any floorplans on this brochure are for illustrative purposes only and are not necessarily to scale.

Offices at: Chorlton, Didsbury, Disley, Hale, Glossop, Macclesfield, Manchester Deansgate, Manchester Whitworth Street, New Mills, Sale, Wilmslow and Withington

14 Market Street, Disley, Cheshire, SK12 2AA

01663 76 78 78

disley@jordanfishwick.co.uk

www.jordanfishwick.co.uk