

High Street, Altrincham, WA14

Asking Price of £20,000 pa



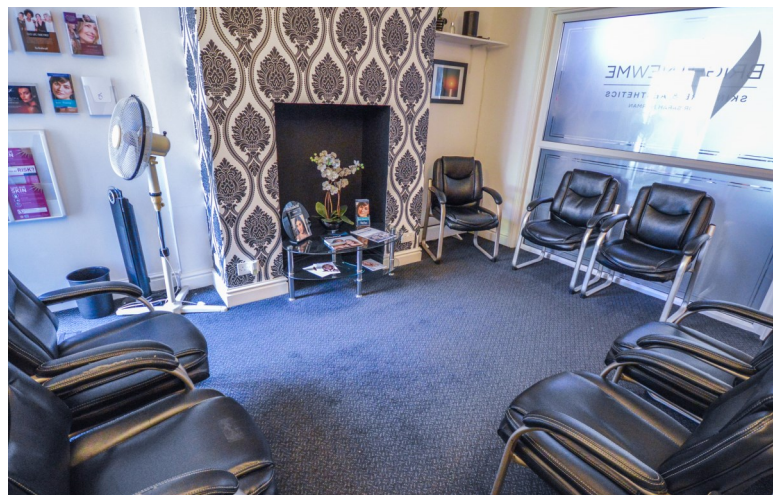
Full Description

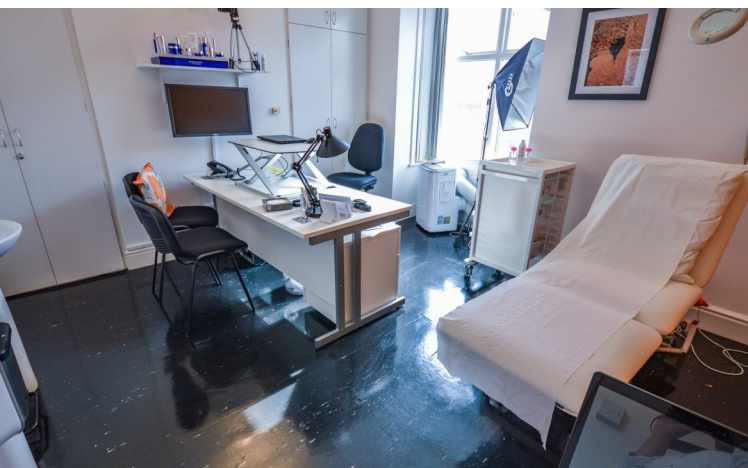
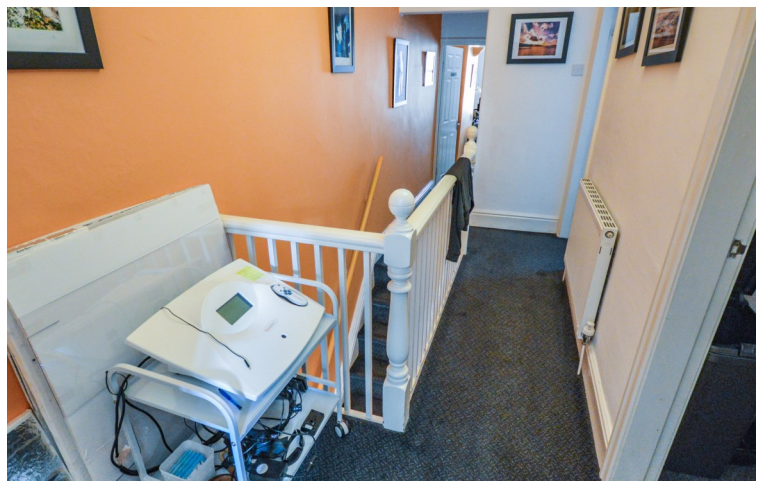
This property is located in the heart of Altrincham town centre, just two minutes walk to the Metrolink station, with all the amenities offered in Altrincham on the doorstep. The property is located adjacent to the Stamford Quarter car park, where staff parking can be rented if required.

The property is accessed via the main entrance on High Street, with office space over the ground and first-floor and storage space located on the lower-ground floor. The property is well maintained and could be adapted to suit a wide variety of businesses.

The property offers a reception area at the front of the building with a glazed screen between this space and the middle office space (this screen could be removed to create a more open-plan space, if required). From the middle office one can access the rear office space, access the rear patio, the disabled WC and the lower-ground floor.

From the main entrance hall, stairs allow access to three first-floor offices, a WC and staff kitchen.



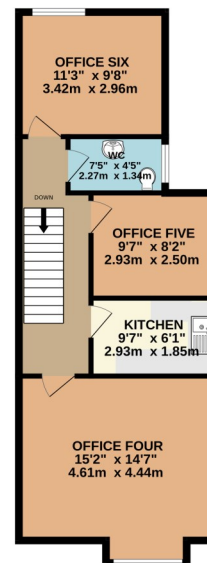
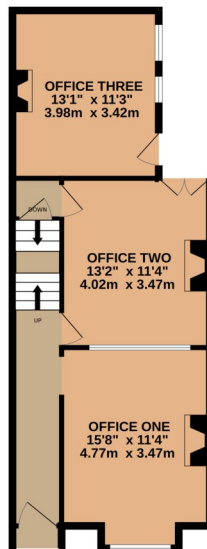
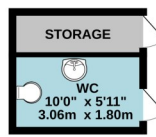
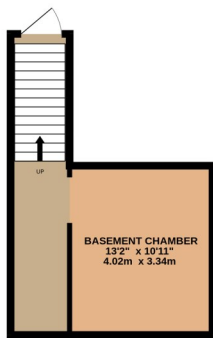




BASEMENT
251 sq.ft. (23.3 sq.m.) approx.

GROUND FLOOR
649 sq.ft. (60.3 sq.m.) approx.

1ST FLOOR
579 sq.ft. (53.5 sq.m.) approx.



TOTAL FLOOR AREA : 1479 sq.ft. (137.4 sq.m.) approx.

Whilst every attempt has been made to ensure the accuracy of the floorplan contained here, measurements of doors, windows, rooms and any other items are approximate and no responsibility is taken for any error, omission or mis-statement. This plan is for illustrative purposes only and should be used as such by any prospective purchaser. The services, systems and appliances shown have not been tested and no guarantee as to their operation or efficiency can be given.
Made with Metropix ©2024

17 The Downs
Altrincham
Cheshire
WA14 2QD

www.jamesonandpartners.co.uk
info@jamesonandpartners.com
0161 941 4445

Agents Note: Whilst every care has been taken to prepare these sales particulars, they are for guidance purposes only. All measurements are approximate and are for general guidance purposes only and whilst every care has been taken to ensure their accuracy, they should not be relied upon and potential buyers are advised to recheck the measurements