



Bush & Co.

32 Golding Road, Cambridge - £1,600 PCM

A three bedroom end of terrace house located just off Radegund Road with quick access to the mainline Train Station, Addenbrookes Hospital, the City Centre and the leisure park. The house is a short walk from many local shops, schools and close by amenities. This property is not available to share groups.

Living/Dining Room

21'6" x 19'7" (6.56 x 5.98)
Spacious sitting/dining room leading to kitchen

Kitchen

9'10" x 9'4" (3.02 x 2.86)
Modern fitted kitchen with back door leading to sunny rear garden. The kitchen is equipped with electric cooker, fridge-freezer and washing machine

Bedroom 1

13'3" x 9'5" (4.04 x 2.89)
Rear master bedroom

Bedroom 2

9'7" x 9'2" (2.94 x 2.81)
Second rear double bedroom

Bedroom 3

9'6" x 7'11" (2.92 x 2.43)
Front small double bedroom

IMPORTANT NOTICE

These particulars, whilst believed to be accurate are set out as a general outline only for guidance and do not constitute any part of an offer or contract. Intending tenants should not rely on them as statements of representation of fact, but must satisfy themselves by inspection or otherwise as to their accuracy. No person in this firms employment has the authority to make or give any representation or warranty in respect of the property.

Bathroom

Bathroom with electric shower over the bath and separate wc

Garden and Parking

Enclosed rear garden with brick shed and off street parking

Key information

EPC Rating – D
Council Tax Band – D (Cambridge City Council)
Rent – £1600 pcm (£369 pw)
Deposit – £1846
Available unfurnished 13th June 2025

Long term tenancy
Regret not available to share groups of more than two

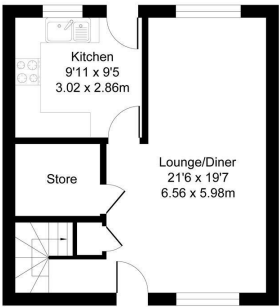
- Three Bedroom House
- Modern Kitchen
- Gas Central Heating and Double Glazing
- Pets Considered
- Off Street Parking
- Large Living/Dining Room
- 78.4 sqm / 844 sqft
- Sorry, No Smokers
- Rear Garden
- Not Available To Share Groups of More Than Two



32 Golding Road, Cambridge

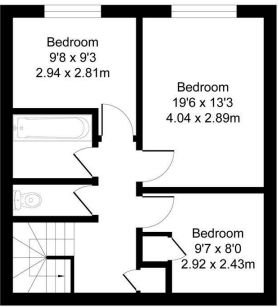
Ground Floor

Area: 39.2 m² ... 422 ft²



First Floor

Area: 39.2 m² ... 422 ft²



Total Area: 78.4 m² ... 844 ft²

All Measurements are approximate and for display purposes only

