



Bush & Co.

27 Glenmere Close, Cambridge - £1,550 PCM

A well presented first floor, two bedroom maisonette in a quiet cul de sac ideally located off Cherry Hinton Road offering quick and easy access to Addenbrookes Hospital, the mainline train station and Cambridge City Centre and within walking distance from a wide variety of shops and local amenities.

Entrance Hall

Ground floor entrance with stairs leading to first floor

Living/Dining Room

4.85 x 3.37
Rear living/dining room dining table and chairs, sofa and coffee table

Kitchen

4.07 x 2.13m
Fitted kitchen with electric oven and hob, fridge freezer, washer-dryer and dishwasher

Bedroom 1

14'0" x 8'11" (4.27 x 2.72)
Rear double bedroom with double bed and mattress, wardrobe and chest of drawers

IMPORTANT NOTICE

These particulars, whilst believed to be accurate are set out as a general outline only for guidance and do not constitute any part of an offer or contract. Intending tenants should not rely on them as statements of representation of fact, but must satisfy themselves by inspection or otherwise as to their accuracy. No person in this firm's employment has the authority to make or give any representation or warranty in respect of the property.

Lettings Office:
8 The Broadway, Mill Road, Cambridge CB1 3AH
01223 508085 lettings@bushandco.co.uk

Bedroom 2

8'11" x 11'9" (2.72 x 3.59)
Front double bedroom with double bed and mattress, wardrobe and chest of drawers

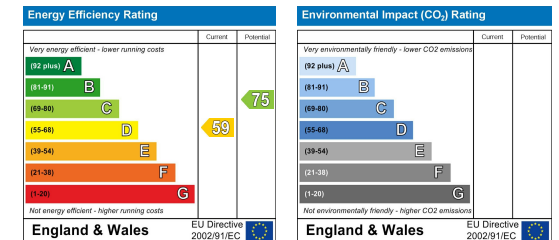
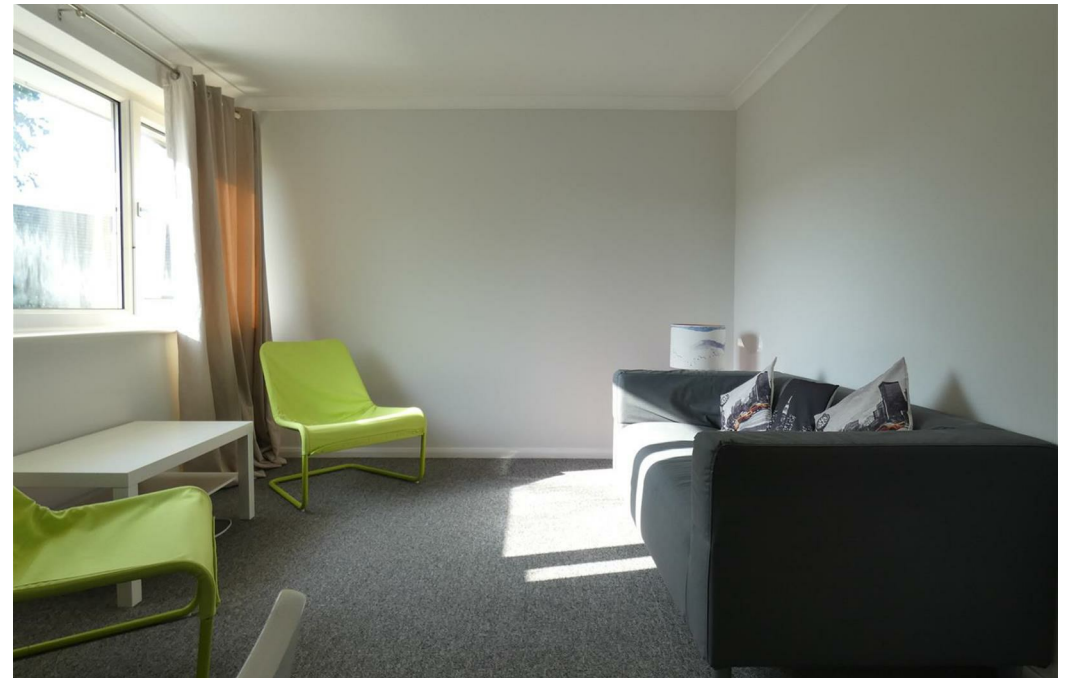
Bathroom

Bathroom with shower over bath WC and hand basin

Key information

EPC Rating – D
Council Tax Band – C (Cambridge City Council)
Rent – £1550 pcm (£357 pw)
Deposit – £1788
Available furnished 2nd November 2024
Long term tenancy

- Maisonette
- Two double bedrooms
- Furnished Property
- Electric heating
- Sorry, no smokers
- Sorry, no pets
- Double glazing
- Street parking
- Modern fitted kitchen
- Long term tenancy



Sales Office:
169 Mill Road, Cambridge CB1 3AN
01223 246262 sales@bushandco.co.uk