



Bush & Co.



211 Cherry Hinton Road, Cambridge, CB1 7DA

£425,000 Freehold



Energy Rating Band D

Cherry Hinton Road is conveniently situated to the favoured south side of the city. The location allows easy access to the city centre, railway station and the Addenbrookes Hospital Biomedical Campus. There are numerous shops and supermarkets nearby and good schooling for all ages is available.

The accommodation comprises a timber and glazed front door to entrance hall with stairs to first floor and radiator. Sitting room with bay window with double glazed units to front elevation and radiator, opening to dining room with electric mock fire place, under stairs storage.

The kitchen comprising a sink unit with mixer taps and a range of wall and base storage cupboards, electric hob and oven, extractor fan, plumbing for washing machine, fridge and freezer space.

Bathroom with bath and shower over, WC and hand wash basin, radiator. Side return with Gas fired boiler serving central heating and hot water. Plumbing for washing machine, door to rear garden.

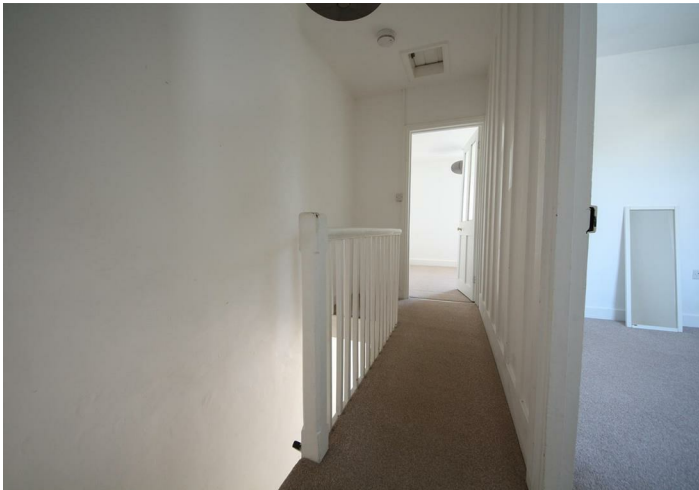
First floor gallery landing access to loft space. Bedroom 1 with double glazed window to front elevation, cupboards and radiator. Bedroom 2 window to rear elevation and radiator. Bedroom 3 window overlooking the rear garden and radiator.

To the front of the house is a garden with driveway and path leading to the front door. Gated side access to the rear garden which is laid to lawn with shrub and a gravel terrace. Brick garden store. The neighbours have a right of way adjacent to the rear of the house.

Services: mains water, drainage, gas and electricity.

Tenure: Freehold.

Council tax: C



Exceptional service in Cambridge and the surrounding villages

Bush & Co is a leading independent estate agency that takes pride in providing the friendly, professional advice you would expect from a long established company combined with the dynamic efficiency of a contemporary, progressive practice.

At Bush & Co we value your custom as highly as we value our own integrity and reputation. Please contact us for a confidential discussion and impartial advice on how we can deliver a truly bespoke service which we are sure will exceed your expectations.

- * Honest valuations with a true market assessment
- * Bespoke individual marketing
- * Premium and feature listing status
- * Dedicated sales progression
- * Social media campaigns
- * Professional quality photography
- * Media tours

Contact us for a free valuation of your property
01223 246262
sales@bushandco.co.uk

Established. Independent. Passionate

Cherry Hinton Road, Cambridge, CB1 7DA



Total Area: 80.4 m² ... 865 ft²

All measurements are approximate and for display purposes only

Plan prepared by charlesharrison.co.uk

Further Information

Tenure - Freehold

Council Tax - Band C

Fixtures & Fittings - Unless specifically mentioned in these particulars all fixtures and fittings are expressly excluded from the sale

Viewing - By Appointment

169 Mill Road
Cambridge
Cambridgeshire
CB1 3AN

www.bushandco.co.uk

