



Bush & Co.



2 Northumberland Close, Cambridge, CB4 2HR

Guide Price £375,000 Freehold



Energy Rating Band C

2 Northumberland Close is a three-bedroom end of terrace family home, of brick elevations under a tiled roof, the accommodation measures over 850, SQFT, there is potential for enlargement subject to the necessary consents.

In brief the accommodation consists on the ground floor, the entrance hallway has stairs rising to the first floor and gives access the living/dining room which is bright and airy with dual aspect windows. The kitchen is adjacent, and has a comprehensive range of matching cabinets and drawers, space and plumbing for various freestanding appliances, large pantry. The garden room has a window to the rear aspect and doors to both the patio area and side passageway.

On the first floor, there are 3 bedrooms, the principal bedroom is a large double with built in wardrobes, bedroom 2 is a double, bedroom 3 is a comfortable single. The family bathroom, has a bath with shower over, hand wash basin and WC.

Outside, the house is set back from the road, behind a low picket fence, there is off street parking for 2 vehicles on a block paved driveway partially covered by wooden carport. The rear garden is large in size, there is a patio area, shrub borders the remainder laid to lawn. There are various outbuildings a side passageway gives access to the front of the house.

Location

Northumberland Close is off Mere Way providing convenient access to the A14, M11, and Cambridge Science Park. In close proximity to a range of local shopping facilities, amenities and schooling for most ages.



Exceptional service in Cambridge and the surrounding villages

Bush & Co is a leading independent estate agency that takes pride in providing the friendly, professional advice you would expect from a long established company combined with the dynamic efficiency of a contemporary, progressive practice.

At Bush & Co we value your custom as highly as we value our own integrity and reputation. Please contact us for a confidential discussion and impartial advice on how we can deliver a truly bespoke service which we are sure will exceed your expectations.

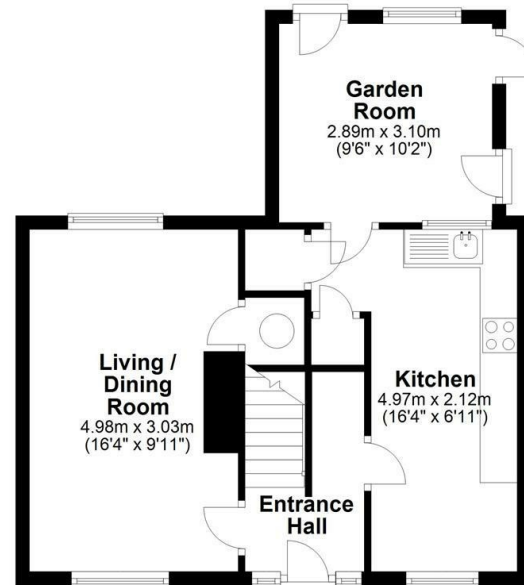
- * Honest valuations with a true market assessment
- * Bespoke individual marketing
- * Premium and feature listing status
- * Dedicated sales progression
- * Social media campaigns
- * Professional quality photography
- * Media tours

Contact us for a free valuation of your property
01223 246262
sales@bushandco.co.uk

Established. Independent. Passionate

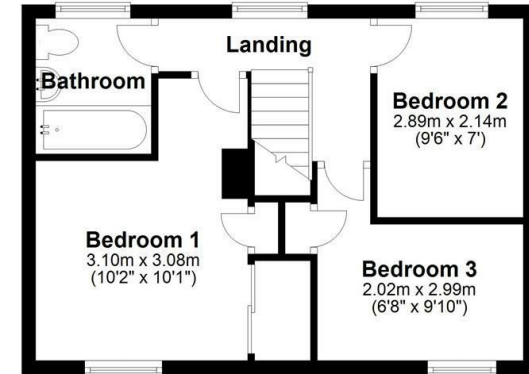
Ground Floor

Approx. 44.5 sq. metres (478.6 sq. feet)



First Floor

Approx. 35.4 sq. metres (381.2 sq. feet)



Total area: approx. 79.9 sq. metres (859.9 sq. feet)

Drawings are for guidance only
Plan produced using PlanUp.

Further Information

Tenure - Freehold

Council Tax - Band C

Fixtures & Fittings -

Viewing - By Appointment

169 Mill Road

Cambridge

Cambridgeshire

CB1 3AN

www.bushandco.co.uk

