



### **15 Field View, Chippenham, SN15 2QT**

**£141,950**

Located close to the town centre, a two double bedroom first floor flat. The accommodation briefly comprises: Entrance hallway, living room, kitchen, bathroom. Further benefits include double glazing and gas central heating. Allocated parking space and storage cupboard. The property is offered for sale with no onward chain.



### **Communal Entrance Hallway**

Front door leads into communal entrance hallway.

### **Entrance Hallway**

Front door leads into entrance hallway with doors to each room, built in cupboard and further walk in storage cupboard, radiator.

### **Living Room 19'08" x 9'09" (5.99m x 2.97m)**



Double glazed window overlooking a green area, radiator, door to kitchen.

### **Fitted Kitchen 9'10" x 7'07" (3.00m x 2.31m)**



Double glazed window, laminated work tops with a range of cupboards and drawers under, also a range of cupboards over, inset sink unit, fitted electric oven, cooker hood, fitted electric oven, plumbing and space for washing machine, space for fridge/freezer, radiator.

### **Bedroom One 15'11" x 9'09" (4.85m x 2.97m)**



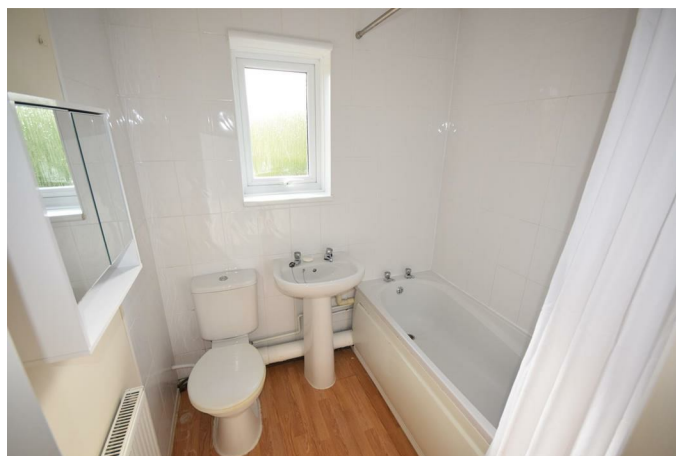
Double glazed window, radiator.

### **Bedroom Two 15'11" x 7'07" (4.85m x 2.31m)**



Double glazed window, radiator.

### **Bathroom**



Panelled bath with over bath shower, W.C, hand basin, radiator.

## Outside



## View to Rear



## Front

There is an allocated parking space and a store cupboard.

## Tenure

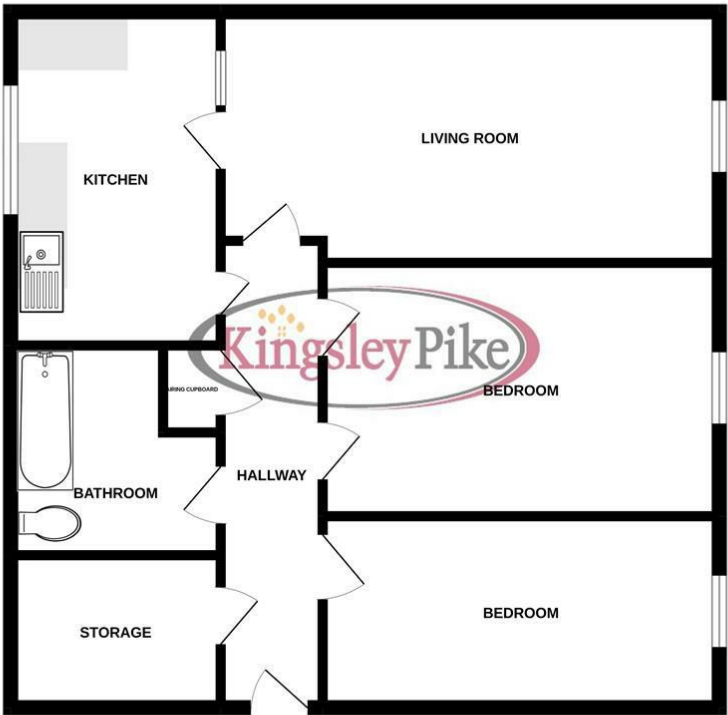
GOV.UK advises the tenure is Leasehold. We are advised by the seller that the lease is 215 years from June 1979. The Ground and service charge combined is currently £112.21pcm

## Council Tax

Gov.UK advises Band B.

Floor Plan

GROUND FLOOR

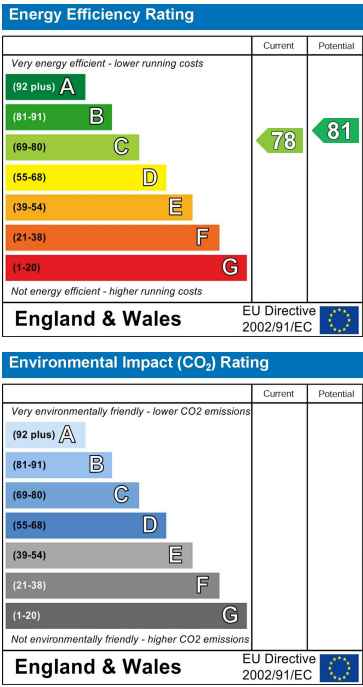


Whilst every attempt has been made to ensure the accuracy of the floorplan contained here, measurements of doors, windows, rooms and any other items are approximate and no responsibility is taken for any error, omission or mis-statement. This plan is for illustrative purposes only and should be used as such by any prospective purchaser. The services, systems and appliances shown have not been tested and no guarantee as to their operability or efficiency can be given.  
Made with Metropix 12/2022

Area Map



Energy Efficiency Graph



These particulars, whilst believed to be accurate are set out as a general outline only for guidance and do not constitute any part of an offer or contract. Intending purchasers should not rely on them as statements of representation of fact, but must satisfy themselves by inspection or otherwise as to their accuracy. No person in this firms employment has the authority to make or give any representation or warranty in respect of the property.