



22 Upper Seagry, Chippenham, SN15 5EX

£665,000

Having been substantially extended and renovated by the current owners this detached family home backs on to fields within the heart of Upper Seagry. Internally comprising; 23' x 21' L shaped kitchen family room with separate utility area, sitting room, hallway and cloakroom on the ground floor.

Three bedrooms the master with en suite bathroom with free standing bath and Juliette balcony overlooking the countryside along with a separate shower room on the first floor. Not only is there a private garden but there is also a separate allotment, timber built Annexe with double car port and a further two parking spaces.

The Village - Upper Seagry

Upper Seagry is a small village located 6 miles North of Chippenham with its Mainline Train Station serving London Paddington, 5 miles South of the picturesque town of Malmesbury and only 2 miles from Junction 17 of the M4. The village has a primary school, church and public house.

22 Upper Seagry

With the house and garden on one side of the street backing on to the countryside and the Annexe, parking, garaging and allotment on the other, you immediately get a sense of individuality from the home.

Having been in the same family for three generations, the latest owners have not only extended but also renovated and updated many aspects.

Entering the property via the utility area (ideal for muddy wellies) there are doors leading to the cloakroom and in to the impressive kitchen/family room.

The L shaped room offers flexible and changeable space allowing for the layout to alter depending on your family needs. It has a tiled floor, range of modern wall and wall mounted units, central island with useful storage drawers, integral dishwasher, sink and drainer, larder cupboard and Rangemaster with ceramic hob and extractor fan over. There is space for living and dining furniture. A doorway leads in to the inner hall with door to the sitting room with inset wood burner, oak mantle and inbuilt storage as well as a staircase to the first floor.

At the far end of the landing is an impressive master suite with Juliette balcony overlooking the countryside. The room is further enhanced by an en suite bathroom, fully tiled with freestanding bath, toilet and wash hand basin.

There are a further two bedrooms which have use of a modern tiled shower room with walk in shower, wash hand basin and toilet.

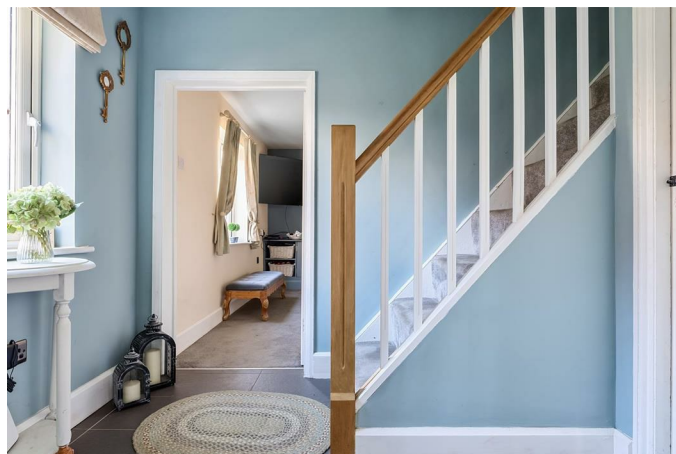
Immediately outside of the property are the private gardens laid to areas of lawn and generous patio with pathway leading to the road.

On the opposite side of the road the land is divided in to three sections. The allotment; A perfect space to grow fruit and vegetables in raised beds, enclosed by picket fencing with gravel pathways running between. The Annexe; A timber built structure with insulation power and light with double

width open fronted garaging and a office/living space accessed by a lockable double glazed door with double glazed window inside. With permission to be used as additional living accommodation in association with the home is a fantastic asset. Parking; side by side parking on the gravelled driveway for at least two cars.

Set in a beautiful village, offering flexibility of accommodation and further future potential we feel this is a home that needs to be viewed to be appreciated.

Hallway



Lounge/Sitting Room



Kitchen/Family Room



Utility Room

Claokroom

Landing



Master Bedroom



En Suite Bathroom





Bedroom Two



Bedroom Three

Shower Room



Gardens



The Annexe



Planning Number - PL/2022/02353 - Currently used as a double car port and enclosed workshop the building has approved planning permission for the accommodation be used in association with 22 Upper Seagry. It would make a fantastic living space for an immediate family member or relative.

Allotment

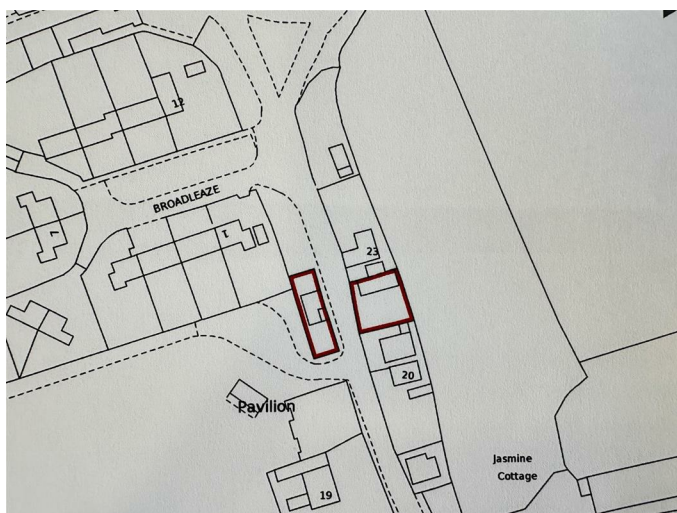


Complementing the gardens and The Annexe is an enclosed allotment style garden with raised beds and gravel pathways.

Parking

Two spaces located side by side to the right of the Annexe.

Tenure



We are advised by the .Gov website that the property is Freehold.

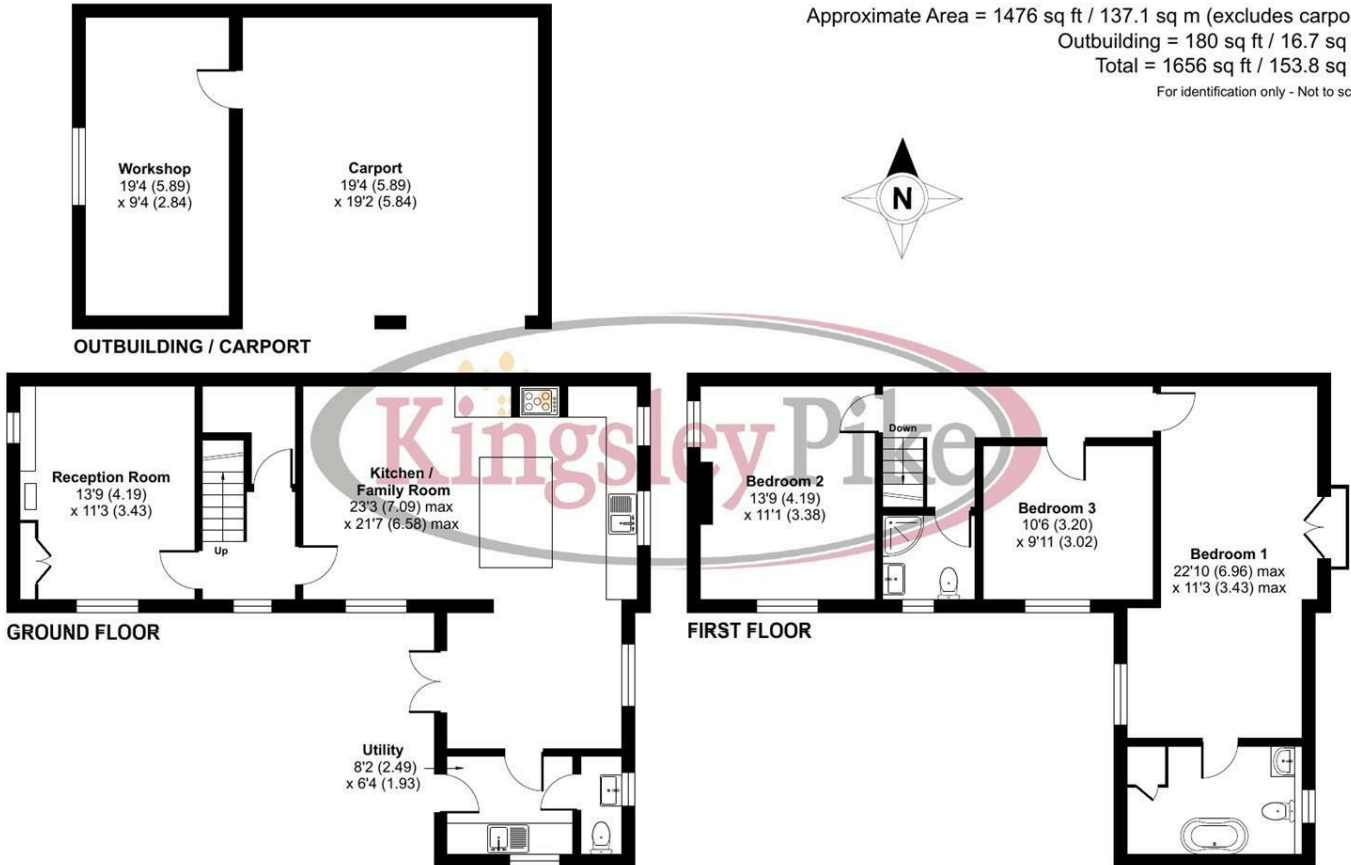
Council Tax

We are advised by the .Gov website that the property is band E.

Floor Plan

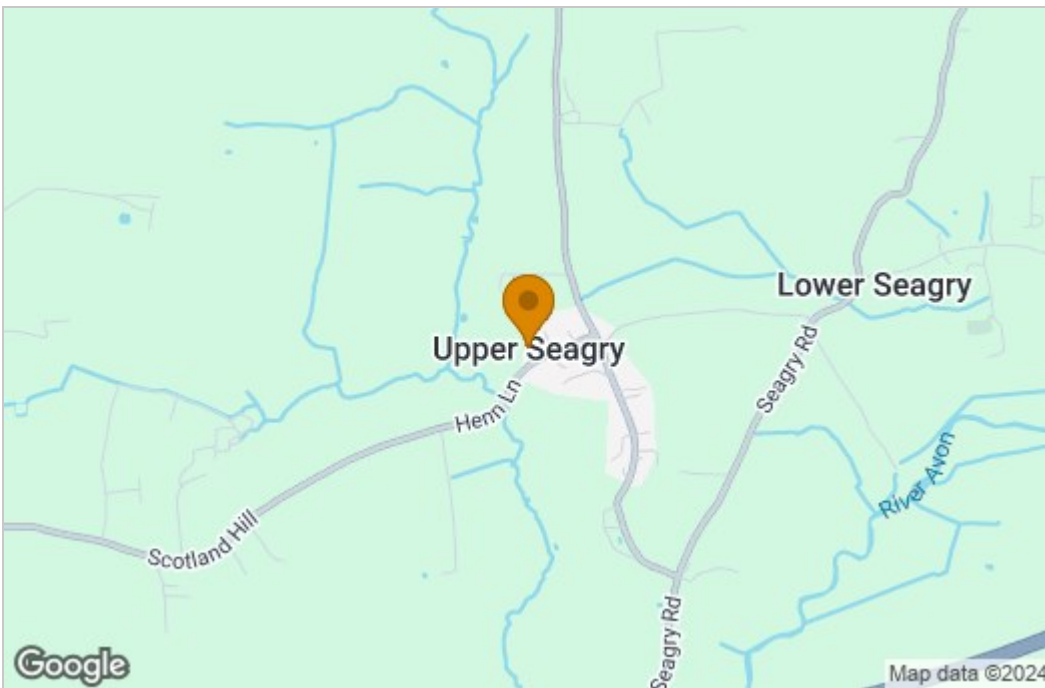
Upper Seagry, Chippenham, SN15

Approximate Area = 1476 sq ft / 137.1 sq m (excludes carport)
 Outbuilding = 180 sq ft / 16.7 sq m
 Total = 1656 sq ft / 153.8 sq m
 For identification only - Not to scale



Floor plan produced in accordance with RICS Property Measurement Standards incorporating International Property Measurement Standards (IPMS2 Residential). © nrichcom 2024. Produced for Kingsley Pike. REF: 1184497

Area Map



Energy Efficiency Graph

Energy Efficiency Rating		Current	Potential
Very energy efficient - lower running costs			
(92 plus) A			82
(81-91) B			
(69-80) C			
(55-68) D		59	
(39-54) E			
(21-38) F			
(1-20) G			
Not energy efficient - higher running costs			
England & Wales		EU Directive 2002/91/EC	

Environmental Impact (CO ₂) Rating		Current	Potential
Very environmentally friendly - lower CO ₂ emissions			
(92 plus) A			
(81-91) B			
(69-80) C			
(55-68) D			
(39-54) E			
(21-38) F			
(1-20) G			
Not environmentally friendly - higher CO ₂ emissions			
England & Wales		EU Directive 2002/91/EC	

These particulars, whilst believed to be accurate are set out as a general outline only for guidance and do not constitute any part of an offer or contract. Intending purchasers should not rely on them as statements of representation of fact, but must satisfy themselves by inspection or otherwise as to their accuracy. No person in this firm's employment has the authority to make or give any representation or warranty in respect of the property.

63 New Road, Chippenham, Wiltshire, SN15 1ES
 Tel: 01249 464844 Email: sales@kingsleypike.co.uk <https://www.kingsleypike.co.uk>