



173 Cowleaze, Chippenham, SN15 3YN

£169,950

RE FITTED BOILER AND NEWLY LAID CARPETS this ground floor flat boasts a cosy reception room, perfect for relaxing or entertaining guests. With two bedrooms, modern bathroom and fitted kitchen. Situated in Central Chippenham, you'll have easy access to all the amenities this vibrant town has to offer. Plus, with a walking distance to the main line railway station, commuting will be a breeze. One of the highlights of this property is the allocated parking space, providing you with the convenience of parking right at your doorstep. No more searching for parking after a long day! Don't miss out on this fantastic opportunity to own or rent this flat in Cowleaze. Book a viewing today! NO ONWARD CHAIN.

Communal Entrance Hallway

Communal entrance with door to flat.

Flat Entrance Hall

Front door leads into entrance hallway, radiator, built in cupboard.

Living Room & Kitchen 18'08" x 10'09" (5.69m x 3.28m)

Doors to outside, radiator.

Kitchen

Work tops with a range of cupboards and drawers, inset electric hob, cooker hood, plumbing and space for washing machine, wall mounted gas boiler.

Bedroom One 16'08" x 9'11" (5.08m x 3.02m)

Double glazed window, radiator, door to en suite.

En Suite

Tiled shower cubicle, hand basin, W.C.

Bedroom Two 13'7" x 8'5" (4.14m x 2.57m)

Double glazed window, radiator.

Bathroom

Panelled bath with mixer spray shower, pedestal hand basin, W.C, radiator.

Parking

Allocated parking space.

Tenure

GOV.UK advise Leasehold

Ground Rent £175.00

Annual Service Charge £1910.00 Payable Apr & Oct
£955.

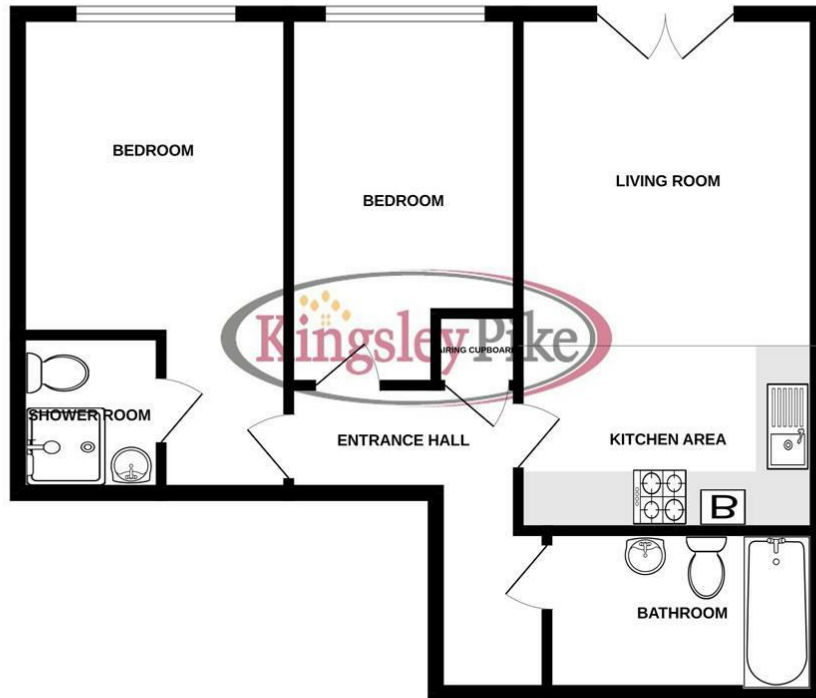
Leasehold 125 Yrs. 108 remaining.

Council Tax Band

GOV.UK advise Band B

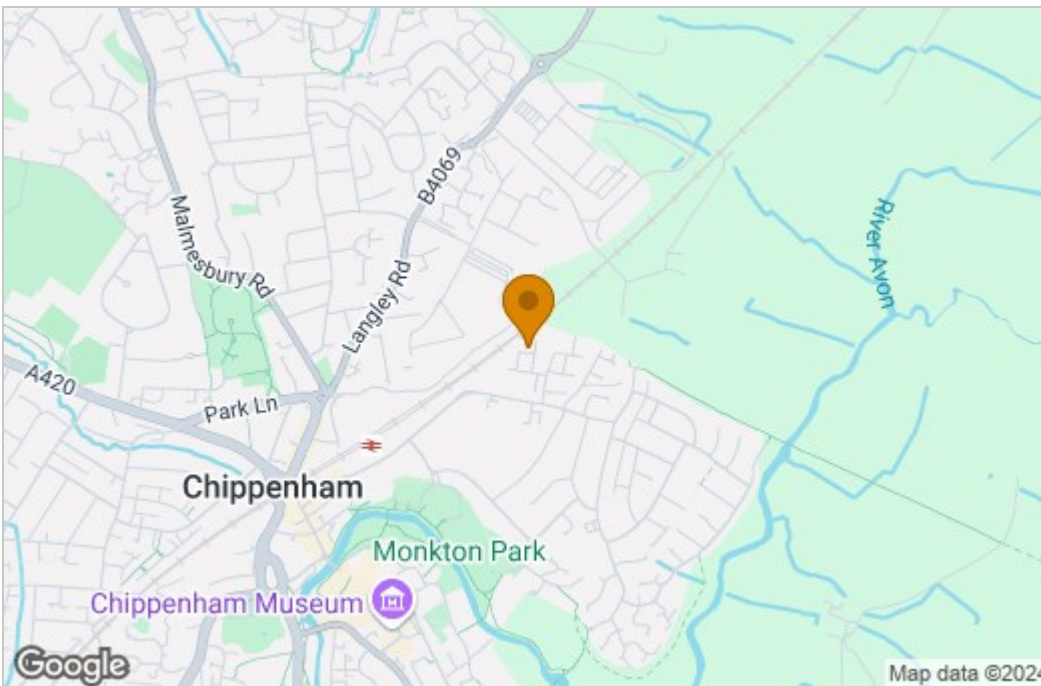
Floor Plan

GROUND FLOOR

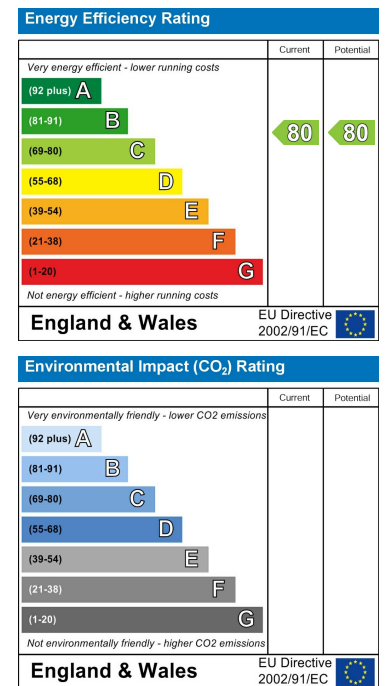


Whilst every attempt has been made to ensure the accuracy of the floorplan contained here, measurements of doors, windows, rooms and any other items are approximate and no responsibility is taken for any error, omission or mis-statement. This plan is for illustrative purposes only and should be used as such by any prospective purchaser. The services, systems and appliances shown have not been tested and no guarantee as to their operability or efficiency can be given. Made with Metropix ©2024

Area Map



Energy Efficiency Graph



These particulars, whilst believed to be accurate are set out as a general outline only for guidance and do not constitute any part of an offer or contract. Intending purchasers should not rely on them as statements of representation of fact, but must satisfy themselves by inspection or otherwise as to their accuracy. No person in this firm's employment has the authority to make or give any representation or warranty in respect of the property.

63 New Road, Chippenham, Wiltshire, SN15 1ES
 Tel: 01249 464844 Email: sales@kingsleypike.co.uk <https://www.kingsleypike.co.uk>