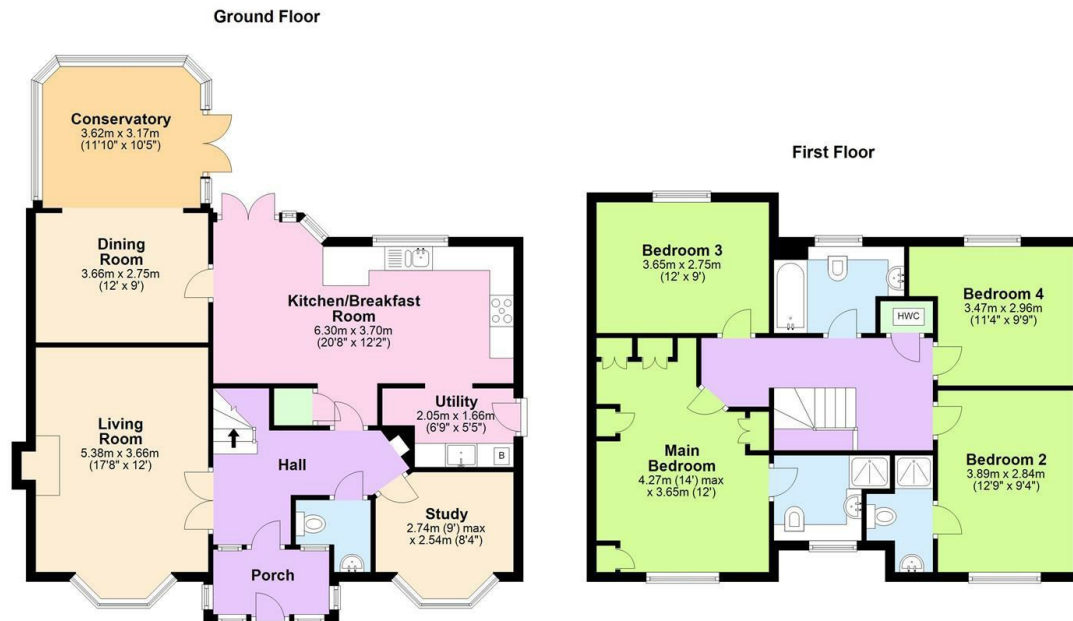




45 Lime Trees, Staplehurst, TN12 0SS

Asking Price £645,000

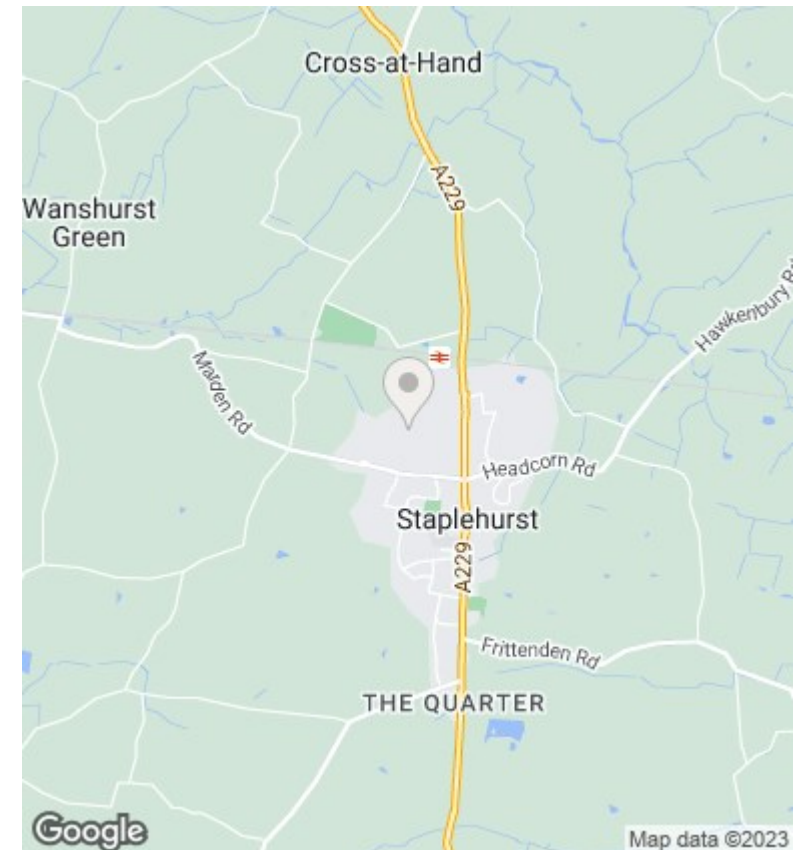
- Living Room
- Kitchen/Breakfast Room
- Two Bedrooms with Ensuite plus two further Bedrooms
- Gardens
- Dining Room
- Conservatory
- Family Bathroom
- Study
- Utility Room
- Double Garage



Total area: approx. 154.9 sq. metres (1667.1 sq. feet)

Note - Dimensions are approximate

Plan produced using PlanUp.



Directions

Viewings

Viewings by arrangement only. Call 01580 893152 to make an appointment.

Council Tax Band

C

EPC Rating:

D

Energy Efficiency Rating		Current	Potential
Very energy efficient - lower running costs			
(92 plus)	A		
(81-91)	B		77
(69-80)	C		
(55-68)	D	65	
(39-54)	E		
(21-38)	F		
(1-20)	G		
Not energy efficient - higher running costs			
England & Wales		EU Directive 2002/91/EC	