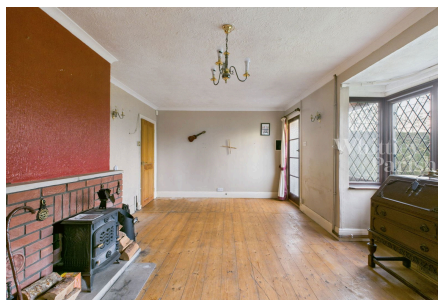


Norwich Road, Dickleburgh

Guide Price £395,000

3 1 1



Being sold with no onward chain, this detached, three bedroom bungalow offers scope for personalisation in a picturesque countryside setting.

Key Features

- No onward chain
- Views over Dickleburgh Moor
- Approx 0.25 acre plot
- Three double bedrooms
- Single garage & carport
- Off-road parking for multiple cars & electric gates
- Wheelchair accessible
- Freehold
- Council Tax Band D
- EPC Rating E

