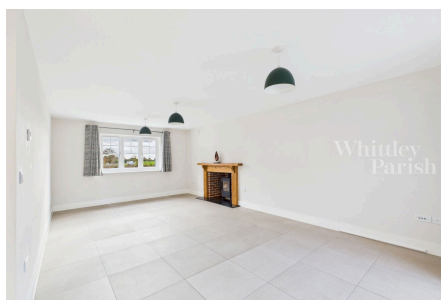


## Alia Way, North Lopham

Guide Price £425,000 - £445,000

3 2 1



No onward chain – Located on a small development of just 15 stylish homes in a rural position, this modern detached home was built in 2024 and has high thermal efficiency and an EPC rating of B.

## Key Features

- Guide Price £425,000-£445,000
- Modern development in a rural countryside position
- Far-reaching field views from front facing window
- Open plan lounge/diner with log burner and bi-fold doors to garden
- Council Tax Band E
- Located on a small development of just 15 homes
- Fast fibre broadband hardwired to every room via inhouse Intranet
- High thermal efficiency and EPC rating B
- Three double bedrooms and en-suite to main bedroom

