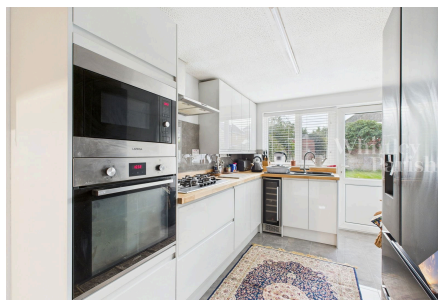


Shelfanger Road, Diss

£280,000

2 1 1



No onward chain – An attractive and extended two bedroom semi-detached Victorian cottage measuring just over 700 square feet. Located less the 0.4 miles to the town centre and offering well presented, modern accommodation with off road parking and planning permission for further extension.

Key Features

- No onward chain
- Recently replaced kitchen with modern integrated appliances and five ring gas hob
- Open fireplace with cast iron stove
- Less than 0.4 mile to town centre
- Council Tax Band B
- Planning permission granted for extension at ground & first floor levels
- Large walk-in pantry cupboard
- Jack & Jill bathroom creating more privacy for the second bedroom
- Freehold - EPC Rating D
- Gas heating - mains drainage

