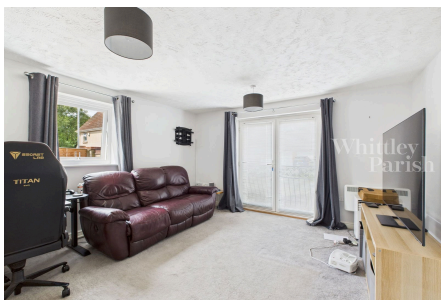


## Victory Court, Diss

£165,000

2 2 1



A spacious two bedroom apartment ideally situated within walking distance of the railway station and town centre.

## Key Features

- Ground floor flat
- Walking distance to railway station
- Two bedrooms
- Leasehold - EPC Rating C
- Electric heating
- Town location
- Allocated parking space
- En-suite to principal bedroom
- Council Tax Band A
- Mains drainage

