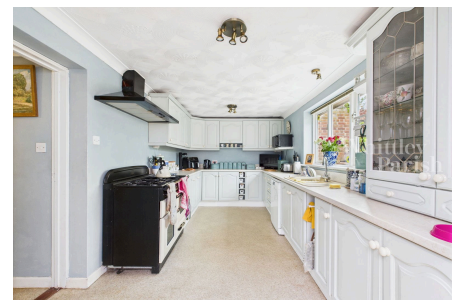


## High Road, Wortwell

Guide Price £550,000 - £575,000

4 3 3



Substantial four bedroom detached Victorian house occupying a generous plot of 0.3 acre and a range of outbuildings with potential for conversion subject to planning permission.

## Key Features

- Guide Price £550,000 - £575,000
- Large plot of 0.3 acre
- Over 2,000 sq ft of outbuildings with potential to be converted (stpp)
- Accommodation in region of 2,200 sq ft
- Substantial detached house with four double bedrooms
- Three reception rooms
- Period features throughout
- Freehold - EPC rating D
- Council Tax Band F
- Gas heating - Mains drainage

