


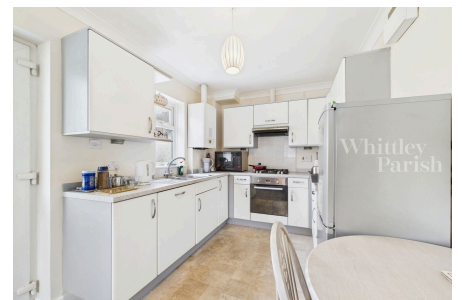


Old Bury Road, Stuston, Diss

Guide Price £475,000 - £500,000

 3
  3
  1



Boasting an individual position, this spacious three bedroom detached bungalow is situated upon a spacious plot enjoying unspoilt rural views, further benefitting from a double detached garage, one bathroom and two en-suite showers, extensive off-road parking and versatile living space in the regions of 1,300 sq ft.

Key Features

- Guide Price £475,000 - £500,000
- Over 1,300 sq ft
- Double garage
- Far reaching rural views
- Council Tax Band D
- Hartismere school catchment
- South facing rear gardens
- 2 ensuites
- Freehold - EPC Rating E
- LPG heating - Mains drainage

