


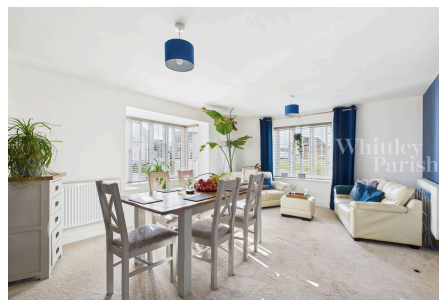


Poppy Way, Gislingham

Guide Price £450,000 - £475,000

 4
  3
  2



Four bedroom detached house built in 2020 by Lovell Homes and benefiting from the remainder of the NHBC 10 year warranty.

Key Features

- Guide Price £450,000 - £475,000
- Four double bedrooms
- Accommodation in region of 1,500 sq ft
- Double garage with electric doors
- Council Tax Band E
- Remainder of NHBC warranty
- Two en-suite bedrooms
- Open plan kitchen/dining room
- Freehold - EPC Rating B
- Air source heating - Mains drainage

