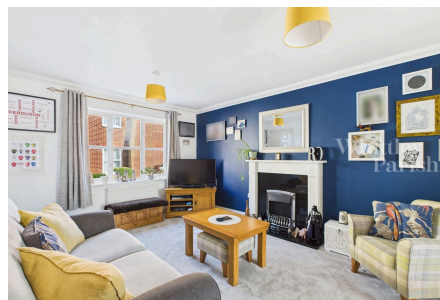


## Ash Plough, Stradbroke

Guide Price £260,000 - £270,000

3 2 1



Three bedroom house located on the popular Hopkins Homes development in the well served village of Stradbroke.

## Key Features

- Guide Price £260,000 - £270,000
- En-suite to principal bedroom
- Close to village amenities
- Popular development
- Council Tax Band C
- Three double bedrooms
- Carport & driveway parking
- Well presented throughout
- Freehold - EPC Rating C
- Oil heating - Mains drainage

