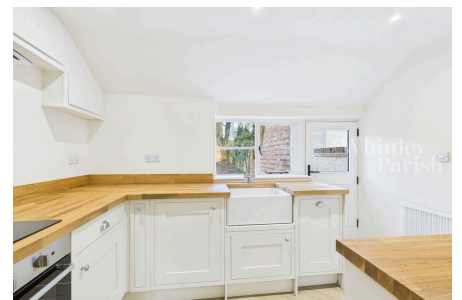


Semere Green Lane, Dickleburgh

Guide Price £260,000 - £280,000

2 1 1



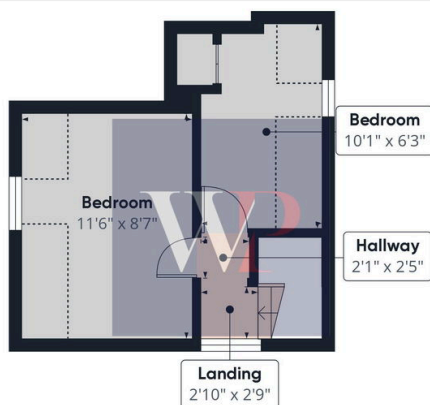
Positioned in serene countryside location, this two bedroom, grade II listed cottage presented in immaculate condition is available with no onward chain.

Key Features

- Guide Price £260,000 - £280,000
- Council Tax Band A
- Off-road parking
- Grade II Listed
- Charm & character
- No onward chain
- Freehold
- Serene countryside location
- Fully renovated 2024
- Drainage - private



Floor 0



Floor 1



Approximate total area⁽¹⁾
468.46 ft²

Reduced headroom
36.41 ft²

(1) Excluding balconies and terraces

Reduced headroom
..... Below 5 ft

While every attempt has been made to ensure accuracy, all measurements are approximate, not to scale. This floor plan is for illustrative purposes only.

Calculations were based on RICS IPMS 3C standard. Please note that calculations were adjusted by a third party and therefore may not comply with RICS IPMS 3C.

GIRAFFE360