




Lewis Drive, Roydon

Guide Price £400,000 - £425,000

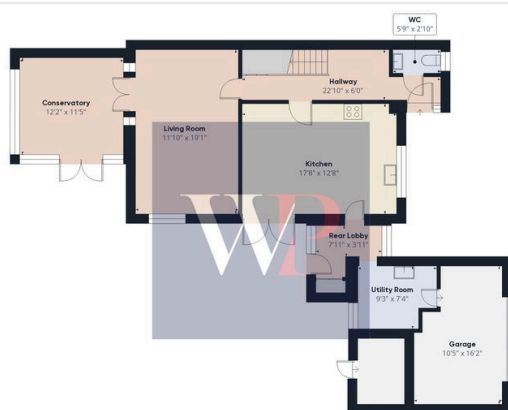
 4  1  2



A four bedroom detached family home offering circa 1,300 square feet of accommodation situated on a no-through close in the popular location of Roydon.

Key Features

- Guide Price £400,000 - £425,000
- Four bedrooms
- Modern kitchen/diner
- Utility room
- Conservatory
- Downstairs WC
- Freehold
- EPC Rating D
- Council Tax Band C
- Gas heating - Mains draiange



Floor 1



Floor 2



Approximate total area[®]
1518.25 ft²

(1) Excluding balconies and terraces

While every attempt has been made to ensure accuracy, all measurements are approximate, not to scale. This floor plan is for illustrative purposes only. Calculations were based on RICS IPMS 3C standard. Please note that calculations were adjusted by a third party and therefore may not comply with RICS IPMS 3C.

GIRAFFE360