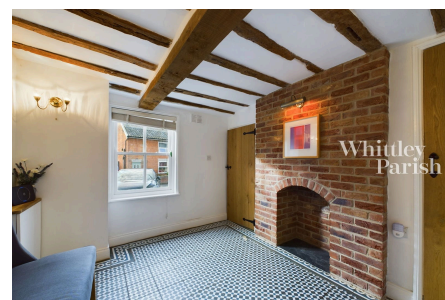


Candlers Lane, Harleston

Offers Over £520,000

3 3 2



A beautifully upgraded and enhanced period cottage, perfectly situated in a prime position within the town centre.

Key Features

- Significantly enhanced & upgraded
- Prime position within town centre
- Annexe/studio
- En-suite facilities
- No onward chain
- Immaculately presented
- Freehold
- EPC Rating C
- Council Tax Band C
- Gas heating - Mains drainage

