


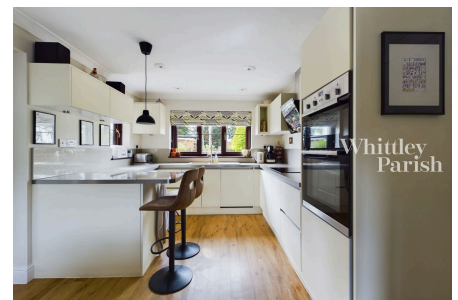


Brewers Green Lane, Diss

Guide Price £525,000 - £550,000

 4  2  2



Individually built three/four bedroom detached house occupying a generous plot and within close proximity to the town centre.

Key Features

- Guide Price £525,000 - £550,000
- Substantial detached house
- Three/four bedrooms
- Sought after location
- Plot extending to 0.25 acre
- Accommodation in region of 1,600 sq ft
- Kitchen refitted 2021
- Freehold - EPC Rating C
- Council Tax Band E
- Gas heating - Private drainage

