

Copeman Road, Roydon

Guide Price £230,000 - £240,000

3 1 2

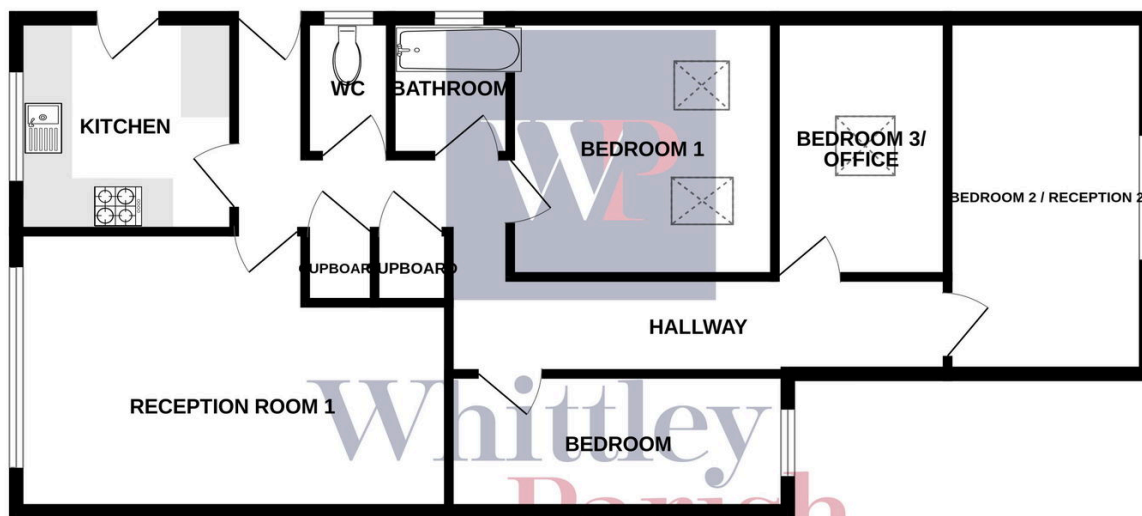


Spacious three/four bedroom extended bungalow in a pleasant close location in the popular village of Roydon being only 1.5 miles from the centre of Diss.

Key Features

- Guide Price £230,000 - £240,000
- Pleasant close location
- Enclosed rear garden
- Driveway parking for up to three cars
- New gas boiler (fitted 2017)
- Double glazed windows and doors
Extended 3/4 bedroom bungalow
- Extended 3/4 bedroom bungalow
- EPC Rating D
- Council Tax Band B
- Mains drainage

GROUND FLOOR
838 sq.ft. (77.9 sq.m.) approx.



TOTAL FLOOR AREA : 838 sq.ft. (77.9 sq.m.) approx.

Whilst every attempt has been made to ensure the accuracy of the floorplan contained here, measurements of doors, windows, rooms and any other items are approximate and no responsibility is taken for any error, omission or mis-statement. This plan is for illustrative purposes only and should be used as such by any prospective purchaser. The services, systems and appliances shown have not been tested and no guarantee as to their operability or efficiency can be given.
Made with Metropix ©2024