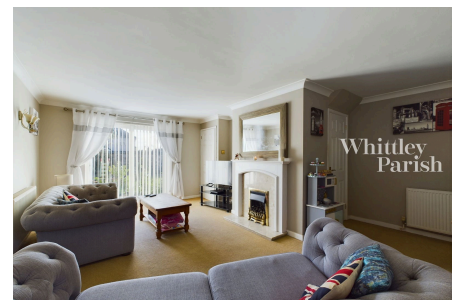


Victoria Road, Diss

Guide Price £290,000 - £310,000

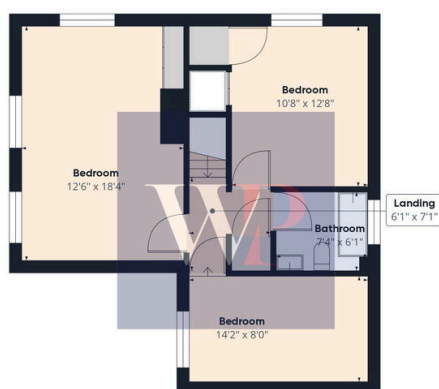
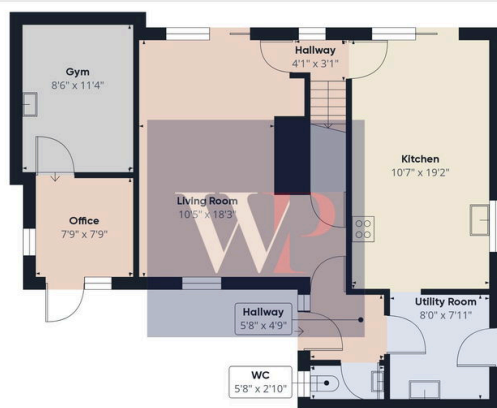
3 1 1



No onward chain, three bedroom detached house with garage and parking and located within walking distance to the town centre and train station.

Key Features

- Guide Price £290,000 - £310,000
- No onward chain
- Spacious detached house
- 3 double bedrooms
- Garage converted in a gym
- Driveway parking for 2 cars
- Close to amenities
- Walking distance to town centre
- Freehold - EPC Rating C
- Council Tax Band C



Approximate total area[®]
1326.54 ft²

(1) Excluding balconies and terraces

While every attempt has been made to ensure accuracy, all measurements are approximate, not to scale. This floor plan is for illustrative purposes only. Calculations were based on RICS IPMS 3C standard. Please note that calculations were adjusted by a third party and therefore may not comply with RICS IPMS 3C.

GIRAFFE360