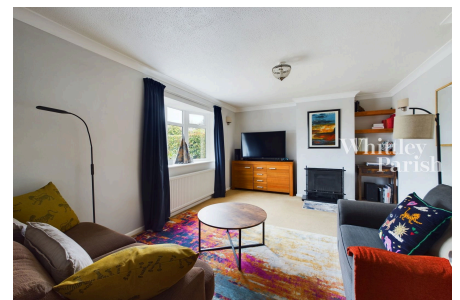


Common Road, Shelfanger

Guide Price £370,000 - £380,000

3 1 1



Offered with no onward chain, three bedroom detached house occupying a fantastic plot of 0.18 acres.

Key Features

- Guide Price £370,000- £380,000
- Plot of approx 0.18 acre
- Accommodation in region of 1,300 sq ft
- Driveway for several cars
- Council Tax Band D
- No onward chain
- Well equipped outdoor office
- Garage & carport
- Freehold - EPC Rating E
- Electric heating - Private drainage

