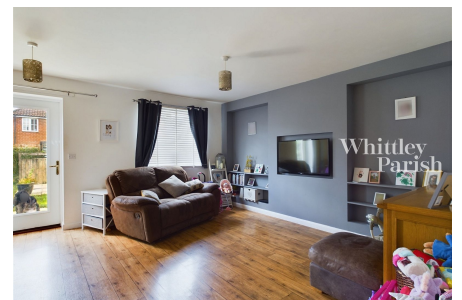


Ash Plough, Stradbroke

£117,500

3 bedrooms 1 bathroom 1 garage



50% shared ownership three bedroom house built by Hopkins Homes.

Key Features

- 50% shared ownership
- Built by Hopkins Homes
- Enclosed rear garden
- Council Tax Band B
- Oil heating
- 3 bedroom end-of-terrace house
- Off-road parking
- Sought after village location
- EPC Rating C
- Mains drainage

