

New Street, Stradbroke

Guide Price £280,000 - £290,000

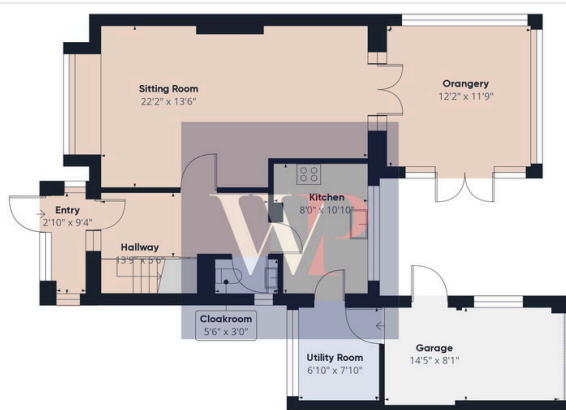
4 1 1



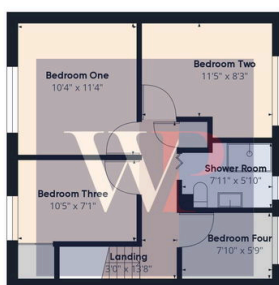
Offered with NO ONWARD CHAIN, spacious detached four bedroom house located close to amenities in the sought after village of Stradbroke.

Key Features

- Guide Price £280,000-£290,000
- No onward chain
- 4 bedrooms
- Low maintenance rear garden
- Garage & carport
- sought after location
- Accommodation in region of 1,300 sq ft
- Freehold - EPC Rating E
- Council Tax Band C
-



Floor 0



Floor 1



Approximate total area[†]
1333.31 ft²

(†) Excluding balconies and terraces

While every attempt has been made to ensure accuracy, all measurements are approximate, not to scale. This floor plan is for illustrative purposes only.

GIRAFFE360