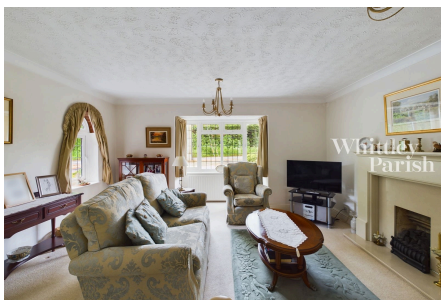


Roydon Road, Diss

Guide Price £375,000 - £400,000

4
 2
 2



A substantial and spacious four bedroom detached house, superbly positioned within walking distance of the town centre and rural countryside. Further benefiting from southerly facing rear gardens, two reception rooms and en-suite facilities.

Key Features

- Guide Price £375,000- £400,000
- Southerly facing rear garden
- En-suite to master bedroom
- 2 reception rooms
- Conservatory extension
- Garage & off-road parking
- Freehold
- EPC Rating D
- Council Tax Band E
- Gas heating - Mains drainage

