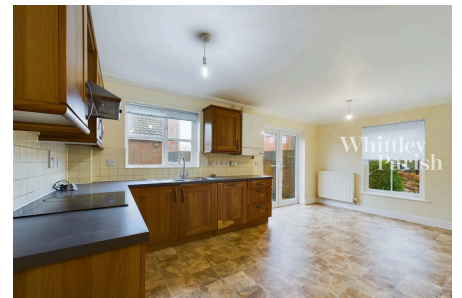


Ash Plough, Stradbroke

Guide Price £270,000 - £280,000

3 1 1



Spacious 3-bedroom house with sunny south westerly gardens, off-road parking, detached garage, and being sold with no onward chain.

Key Features

- Guide Price £270,000 - £280,000
- No onward chain
- Approx 1000 sq ft
- Detached garage & off-road parking
- South westerly facing rear gardens
- Built by Hopkins Homes
- Corner plot position
- Council Tax Band C
- Freehold
- EPC Rating C



Approximate total area⁽¹⁾
958.51 ft²

(1) Excluding balconies and terraces

While every attempt has been made to ensure accuracy, all measurements are approximate, not to scale. This floor plan is for illustrative purposes only.

GIRAFFE360