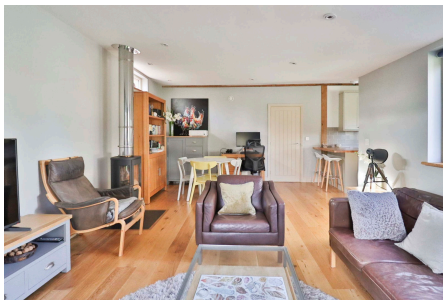


## Moneypot Hill, Redgrave, Diss

Guide Price £425,000 - £450,000

2 1 1

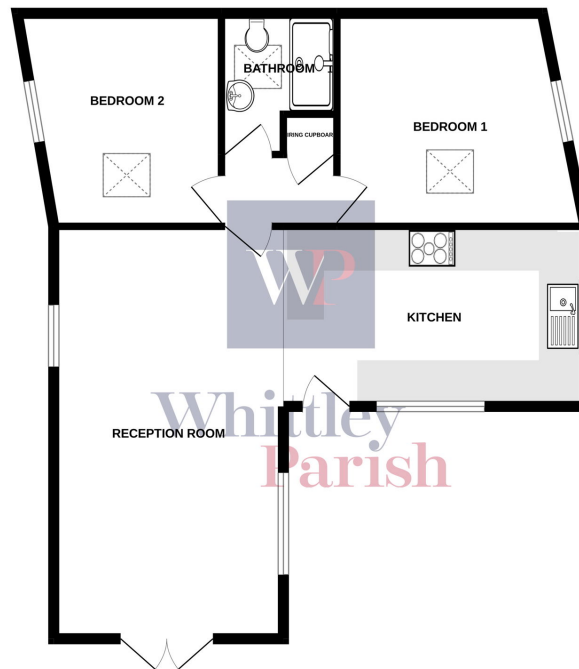


Enjoying a prime position within the rural countryside, this two bedroom barn conversion is immaculately presented throughout benefitting from a wealth of character and charm, open plan living and off-road parking.

## Key Features

- GUIDE PRICE £425,000 - £450,000
- Close to rural countryside
- Sought after village
- Wealth of character & charm
- Immaculately presented throughout
- Open plan living
- Freehold
- Council tax Band C
- Off road parking
- EPC Rating E

GROUND FLOOR  
743 sq.ft. (69.1 sq.m.) approx.



TOTAL FLOOR AREA: 743 sq.ft. (69.1 sq.m.) approx.  
Whilst every attempt has been made to ensure the accuracy of the floorplan contained herein, measurements of doors, windows, rooms and any other items are approximate and no responsibility is taken for any error, omission or mis-statement. This plan is for illustrative purposes only and should be used as such by any prospective purchaser. The services, systems and appliances shown herein have not been tested and no guarantee as to their operability or efficiency can be given.  
Made with Metropix 02022