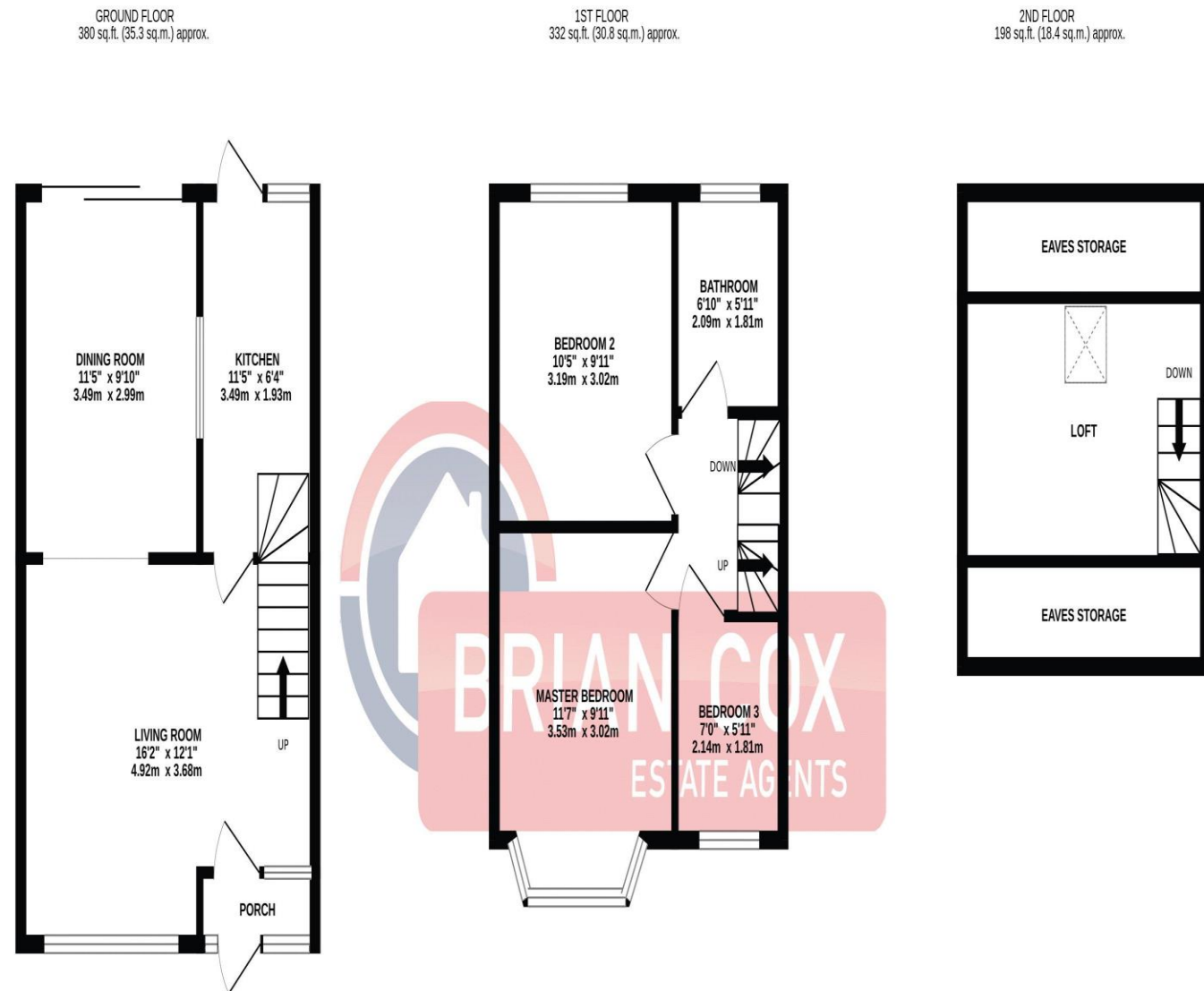


the floorplan...



TOTAL FLOOR AREA: 909 sq.ft. (84.5 sq.m.) approx.

Whilst every attempt has been made to ensure the accuracy of the floorplan contained here, measurements of doors, windows, rooms and any other items are approximate and no responsibility is taken for any error, omission or mis-statement. This plan is for illustrative purposes only and should be used as such by any prospective purchaser. The services, systems and appliances shown have not been tested and no guarantee as to their operability or efficiency can be given.
Made with Metropix ©2024

more details from...

call: Brian Cox Greenford: 0208 578 1004
email: james.legrove@brian-cox.co.uk
web: www.brian-cox.co.uk



0208 578 1004
brian-cox.co.uk



Brian Cox and Company, with five offices locally, are again delighted to be instructed as sole agents for this three bedroom terraced house located in the sought after Medway Village. Brief property benefits include off street parking, a through lounge and an additional room in the loft. The property is located 0.3 miles from Perivale tube station and also offers easy access to the A40. Similar properties locally have gone fast so call now!!



Offers in Excess of
£550,000

Rhyl Road, Greenford UB6 8LD



in brief...

- Three Bedrooms
- Freehold
- Stunning Condition
- Medway Village
- Driveway
- Close to Station



the location...

nearest stations ...

Perivale (0.3 miles)
 South Greenford (0.3 miles)
 Greenford (0.8 miles)

The property is situated in the London Borough of Ealing and benefits from a number of local amenities including; Perivale Community Centre, Perivale Library, Sudbury Golf Club and Ealing Central Sports Ground to name a few.

Perivale has a station on the Central Line of the London Underground system, and is also near to Alperton Tube Station on the Piccadilly Line. Three bus routes (95, E5 and 297) link the town to Shepherds Bush, Ealing, Greenford, Southall, Wembley and Willesden.

There are many local schools in the area some include Selborne Primary School, Oldfield Primary School, Perivale Primary School and Brentside Primary School.