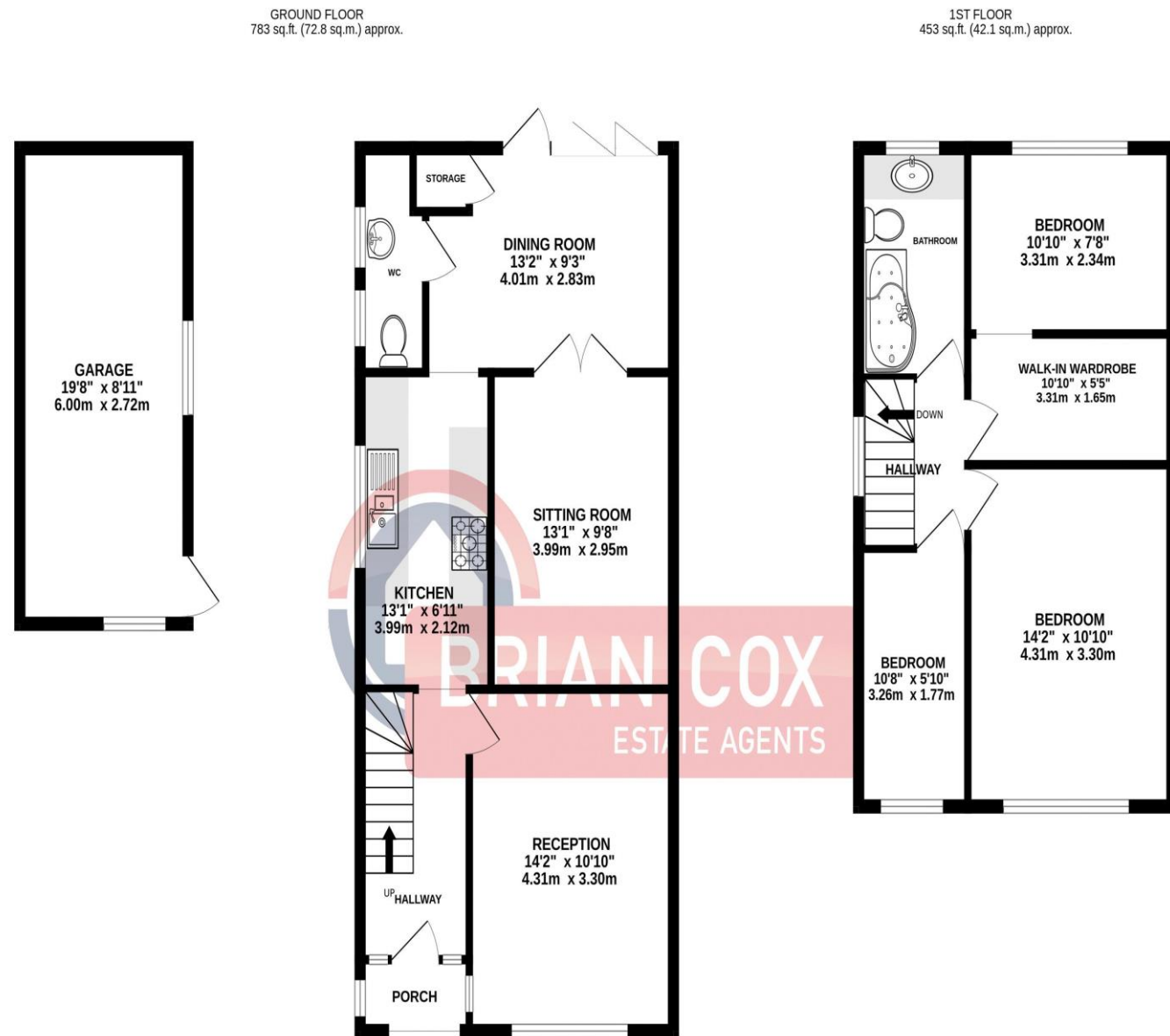


the floorplan...



TOTAL FLOOR AREA: 1237 sq.ft. (114.9 sq.m.) approx.
Whilst every attempt has been made to ensure the accuracy of the floorplan contained here, measurements of doors, windows, rooms and any other items are approximate and no responsibility is taken for any error, omission or mis-statement. This plan is for illustrative purposes only and should be used as such by any prospective purchaser. The services, systems and appliances shown have not been tested and no guarantee as to their operability or efficiency can be given.
Made with Metropix ©2024

more details from...

call: **Brian Cox Greenford: 0208 578 1004**
email: emma.gerald@brian-cox.co.uk
web: www.brian-cox.co.uk



0208 578 1004
brian-cox.co.uk

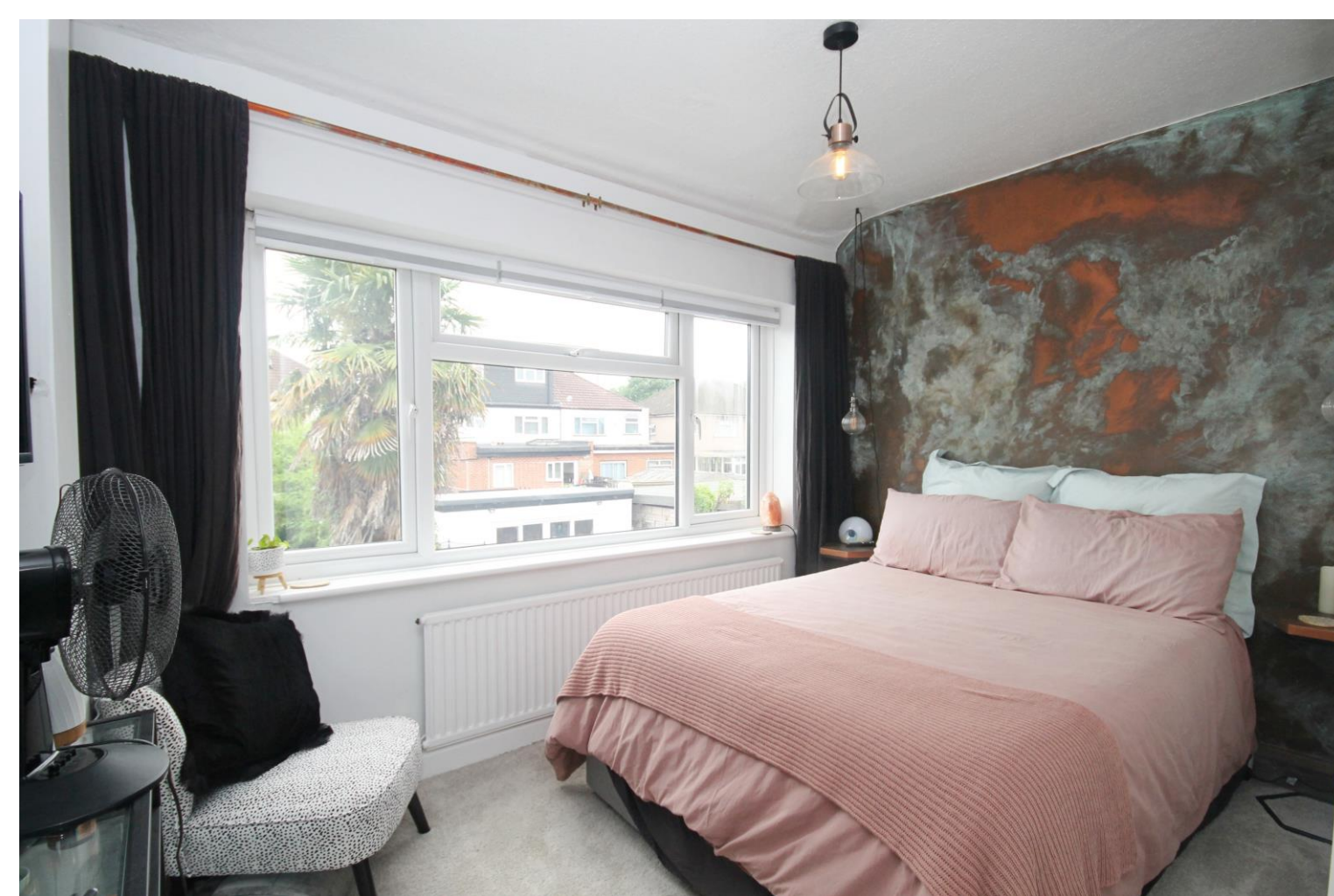


THREE BEDROOM - SEMI-DETACHED - EXTENDED - BEAUTIFUL CONDITION THROUGHOUT - OFF STREET PARKING. Brian Cox and Company are proud to offer to the market this three-bedroom semi-detached family home located in the ever popular Medway Village within easy reach of local shops, schools and transport links. The property briefly comprises an entrance hallway, a light and airy front reception room, modern fitted kitchen extended dining room, separate sitting room. and downstairs w/c . Upstairs you have three bedrooms, one with a walk-in wardrobe and a family bathroom. Further benefits include off street parking, private rear garden, garage, double glazing, gas central heating and potential to extend (stpp). Viewings are highly recommended, so call now to arrange your chance to view and avoid disappointment!!



Offers in Excess of
£620,000

Conway Crescent, Greenford UB6 8HZ



in brief...

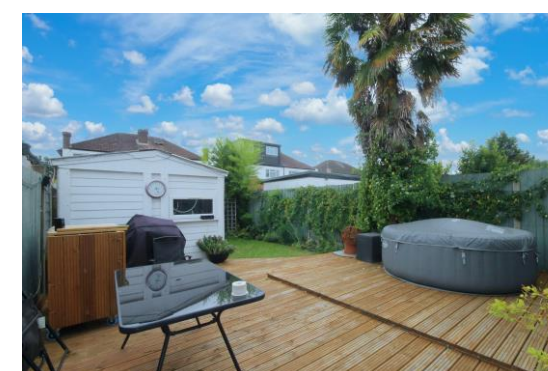
- Three Bedroom
- Semi-Detached
- Extended
- Beautiful Condition Throughout
- Walk-in Warbrobe
- Off Street Parking



the location...

nearest stations ...

South Greenford (0.1 miles)
 Perivale (0.6 miles)
 Greenford (0.6 miles)



Greenford is a large suburb in the London Borough of Ealing in West London, UK. It was an ancient parish in the historic county of Middlesex. It is 11 miles (18 km) from Charing Cross in Central London.



There are several local primary schools in the area which include Selborne Primary School, Oldfield Primary School, Coston Primary School and Edward Betham Church of England Primary School.



If you have older children there are also local secondary schools nearby some of these include William Perkin Church of England High School, Brentside High School and The Cardinal Wiseman Catholic School.