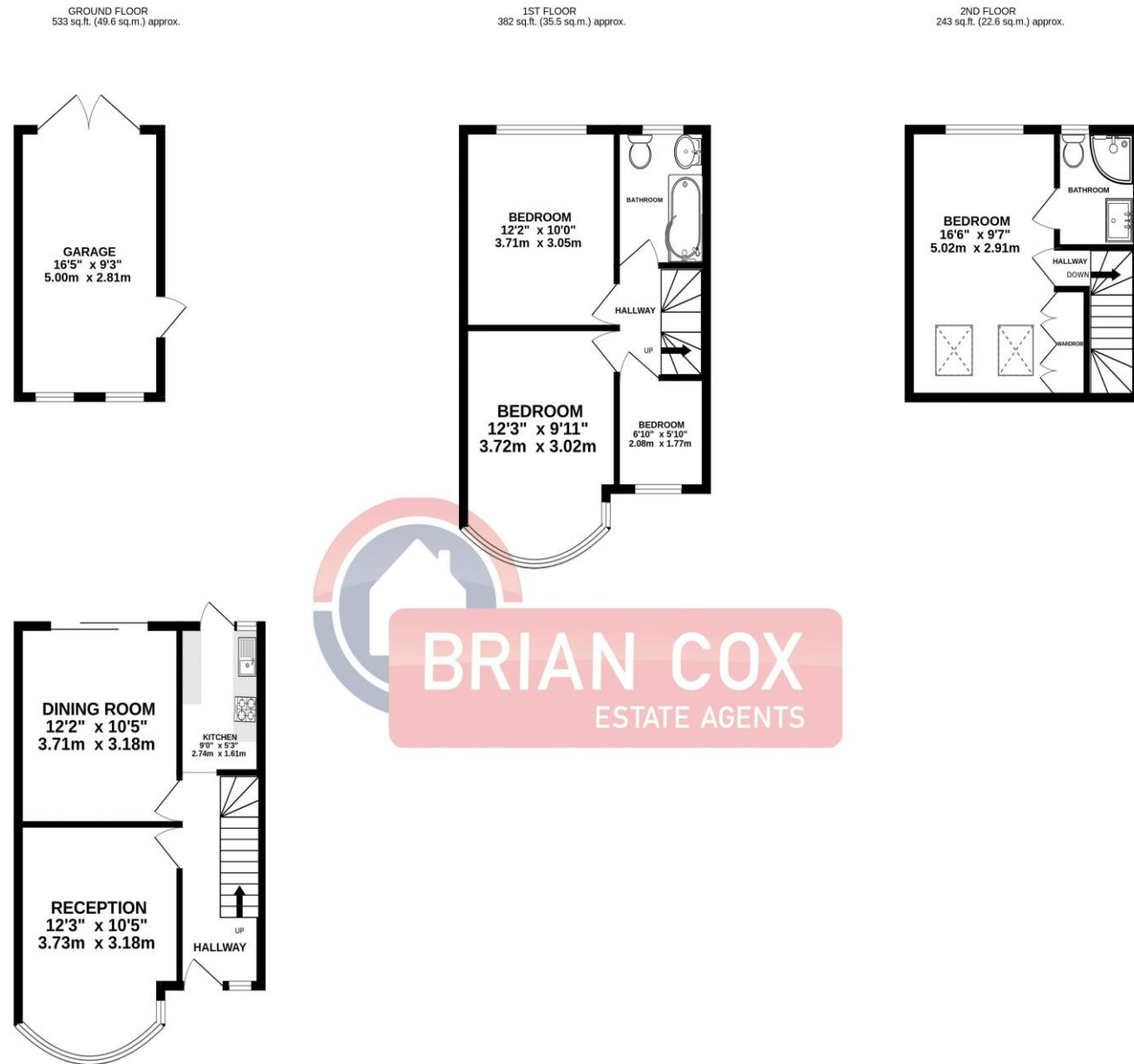


# the floorplan...



**BRIAN COX**  
ESTATE AGENTS

TOTAL FLOOR AREA: 1159 sq.ft. (107.7 sq.m.) approx.  
Whilst every attempt has been made to ensure the accuracy of the floorplan contained here, measurements of doors, windows, rooms and any other items are approximate and no responsibility is taken for any error, omission or mis-statement. This plan is for illustrative purposes only and should be used as such by any prospective purchaser. The services, systems and appliances shown have not been tested and no guarantee as to their operability or efficiency can be given.  
Made with Metropix ©2024

## more details from...

call: **Brian Cox Greenford: 0208 578 1004**  
email: [emma.gerald@brian-cox.co.uk](mailto:emma.gerald@brian-cox.co.uk)  
web: [www.brian-cox.co.uk](http://www.brian-cox.co.uk)



0208 578 1004  
[brian-cox.co.uk](http://brian-cox.co.uk)



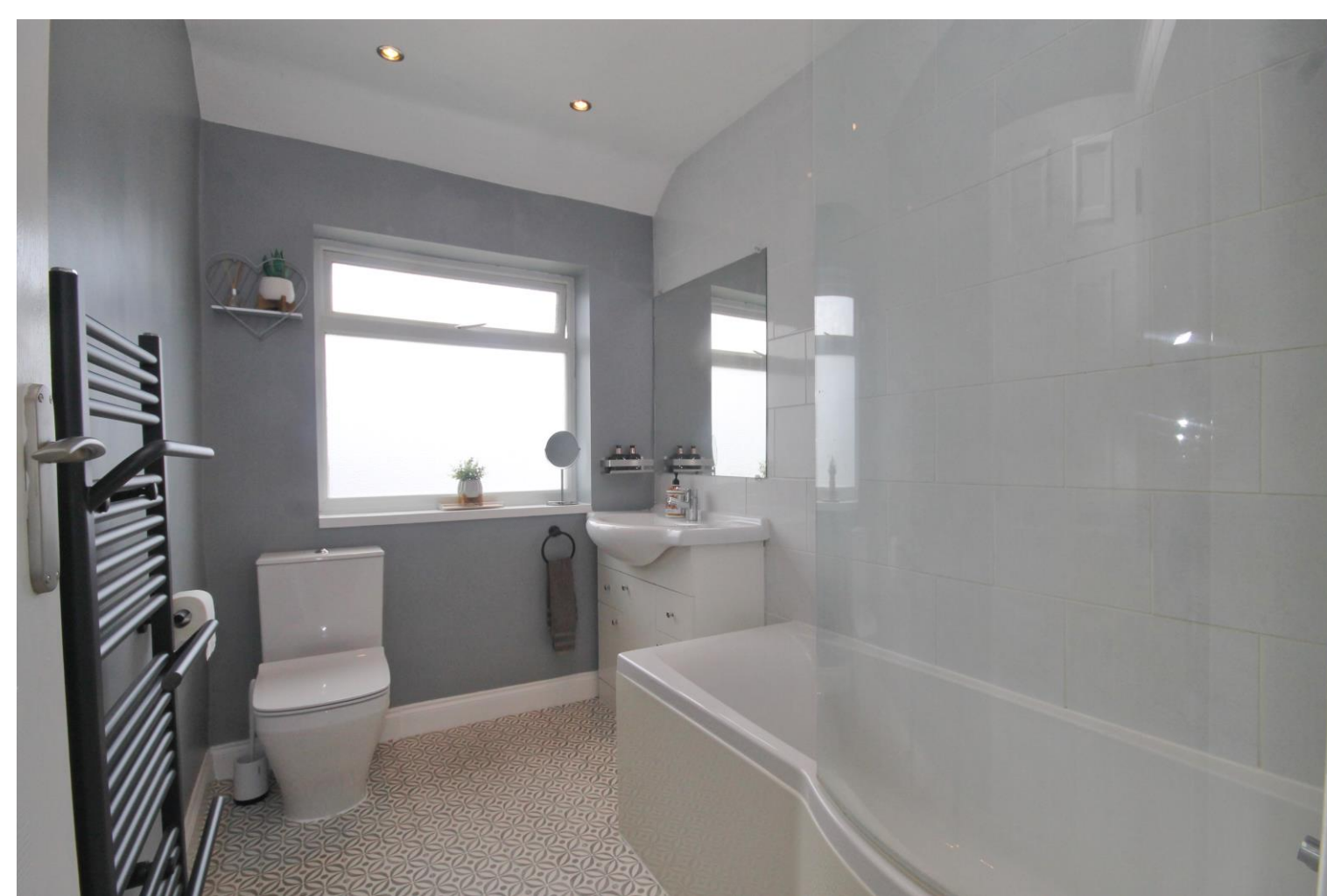
FOUR BEDROOM - FREEHOLD - GARAGE - EXTENDED LOFT - TWO BATHROOMS - OFF STREET PARKING. Brian Cox and Company are delighted to bring to the market this well presented four-bedroom family home located in the Medway Village. The ground floor comprises a spacious entrance hallway, a bright reception room, separate dining room and fitted kitchen. To the first floor there are two generously sized bedrooms, a third bedroom currently being used as a study and a family bathroom. To the top floor you will find the master bedroom with en-suite shower room. The property is within easy reach of Perivale Station, Ealing Central Sports Ground and the ever-popular Selborne Primary School. Viewings are available now, so call to arrange yours!!



£640,000  
Freehold

Hodder Drive, Greenford UB6 8LL





### in brief...

- Four Bedroom
- Freehold Terraced House
- Off Street Parking
- Garage to the Rear
- Beautifully Presented
- Medway Viillage



### the location...

#### nearest stations ...

- Perivale (0.4 miles)
- South Greenford (0.5 miles)
- Greenford (1.1 miles)



The property is situated in the London Borough of Ealing and benefits from a number of local amenities including Perivale Community Centre, Perivale Library, Sudbury Golf Club and Ealing Central Sports Ground to name a few.



Perivale has a station on the Central Line of the London Underground system and is also near to Alperton Tube Station on the Piccadilly Line. Three bus routes (95, E5 and 297) link the town to Shepherds Bush, Ealing, Greenford, Southall, Wembley and Willesden.



There are many local schools in the area some include Selborne Primary School, St John Fisher Primary School, Oldfield Primary School, Perivale Primary School and Brentside Primary School.