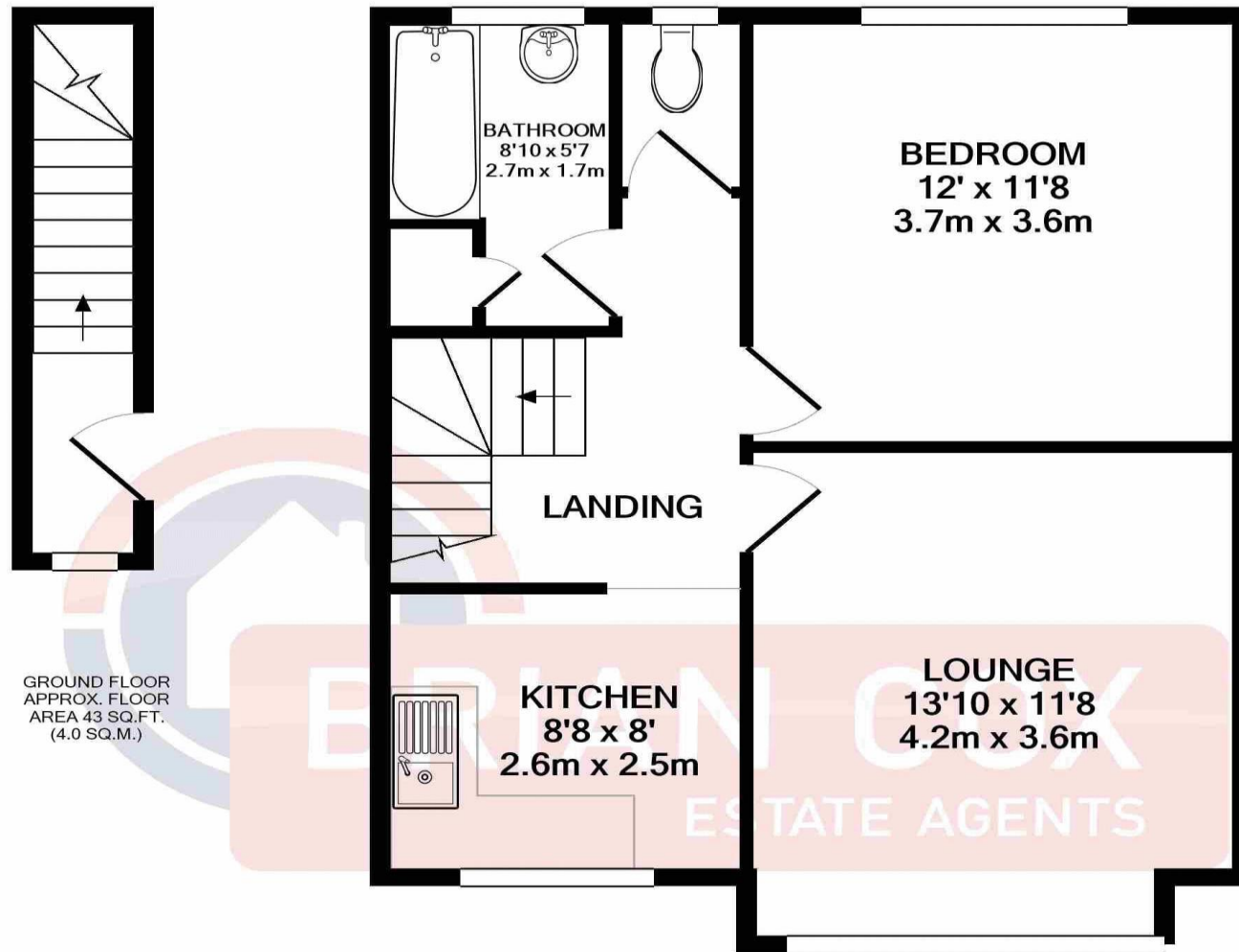


the floorplan...



GROUND FLOOR
APPROX. FLOOR
AREA 43 SQ.FT.
(4.0 SQ.M.)

1ST FLOOR
APPROX. FLOOR
AREA 505 SQ.FT.
(47.0 SQ.M.)

TOTAL APPROX. FLOOR AREA 549 SQ.FT. (51.0 SQ.M.)

Whilst every attempt has been made to ensure the accuracy of the floor plan contained here, measurements of doors, windows, rooms and any other items are approximate and no responsibility is taken for any error, omission, or mis-statement. This plan is for illustrative purposes only and should be used as such by any prospective purchaser. The services, systems and appliances shown have not been tested and no guarantee as to their operability or efficiency can be given
Made with Metropix ©2021

more details from...

call: **Brian Cox North Greenford: 0208 578 1004**
email: emma.gerald@brian-cox.co.uk
web: www.brian-cox.co.uk



0208 578 1004
brian-cox.co.uk



ONE BEDROOM - FIRST FLOOR - SHARE OF FREEHOLD. Brian Cox & Company are pleased to present to the market this unique one bedroom property, located within walking distance of the beautiful Ravenor Park as well as local amenities, transport and schooling. Viewings are highly recommended for this rarely available share of freehold flat so call now to arrange your chance to view and avoid disappointment!!



£259,950
Share of Freehold

Eastmead Avenue, Greenford UB6 9RA



in brief...

- One Double Bedroom
- First Floor
- Share of Freehold
- Well Maintained
- Walking Distance to Ravenor Park
- Convenient Location



the location...

nearest stations ...

- Greenford (1.1 miles)
- South Greenford (1.2 miles)
- Northolt (1.3 miles)

Greenford is a large suburb in the London Borough of Ealing in West London, UK. It was an ancient parish in the historic county of Middlesex. It is 11 miles (18 km) from Charing Cross in Central London.

Within a 10 minute walk you will be situated on Greenford's Broadway which offers ample shops, schools and bus links to numerous locations.

If you commute in or out of London then you will be pleased to know that within a short 15-20 minute walk you will be at Greenford's Central Line Tube or if you drive then just a couple of minutes down the road is the A40 which offers an excellent link to the city or the Home Counties.

There are several local schools in the area which include Ravenor Primary School, Stanhope Primary School, Coston Primary School, Edward Betham Church of England Primary School, Greenford High School, The Cardinal Wiseman Catholic School and William Perkin Church of England High School.