

the floorplan...



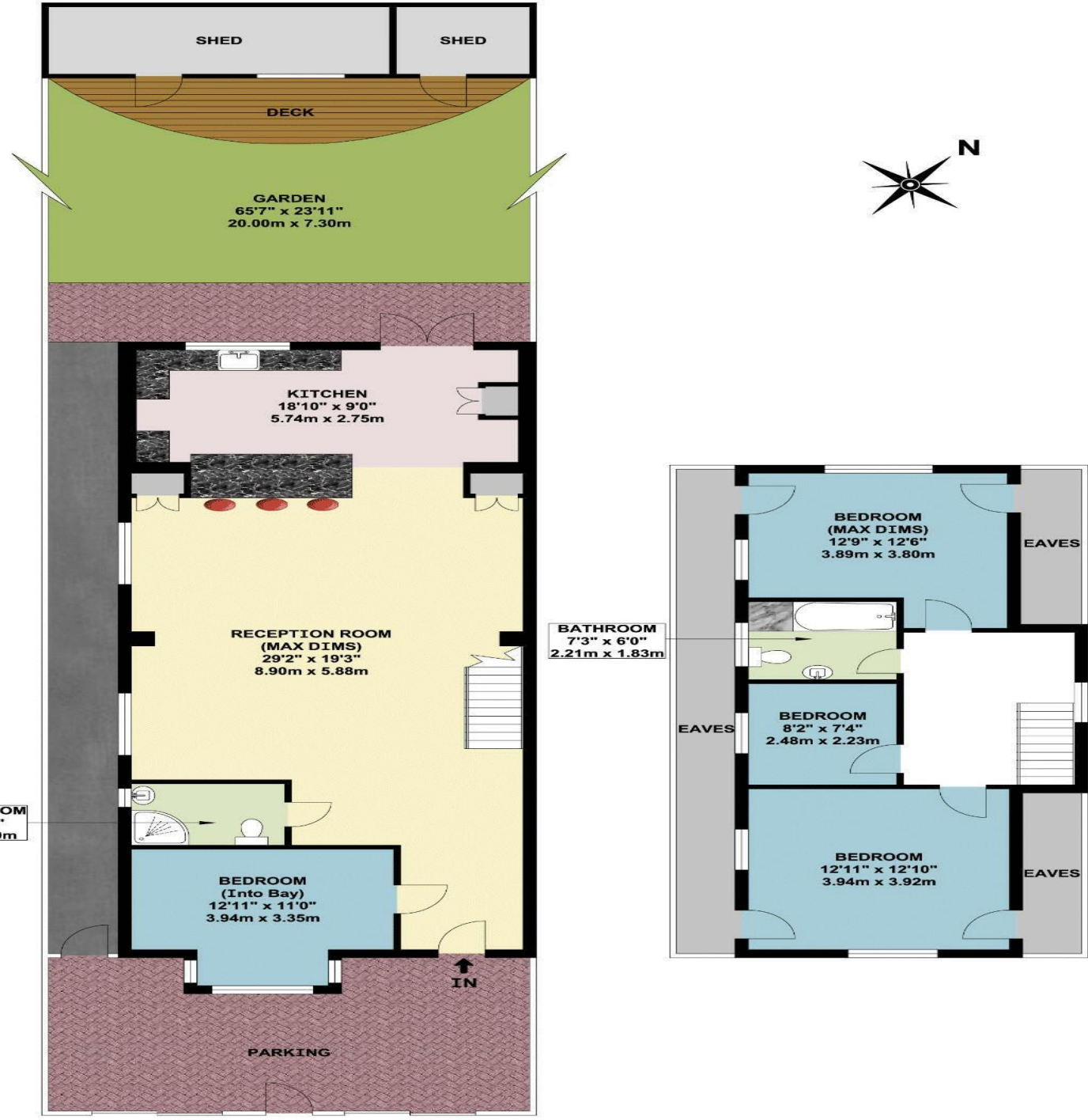
0208 578 1004  
brian-cox.co.uk



Brian Cox and Company are proud to bring to the market this detached bungalow situated in the heart of Greenford. The property boasts four bedrooms, two bathrooms, well-appointed kitchen, welcoming reception room, a good sized rear garden

£780,000  
Freehold

Millet Road, Greenford UB6 9SG



GROUND FLOOR  
FIRST FLOOR  
APPROX. GROSS INTERNAL FLOOR AREA 1475.62 SQ. FT / 137.09 SQ. M

more details from...

call: Brian Cox Greenford: 0208 578 1004  
email: emma.gerald@brian-cox.co.uk  
web: www.brian-cox.co.uk



Consumer Protection from Unfair Trading Regulations 2008 We have not tested any apparatus, equipment, fixtures, fittings or services and so cannot verify that they are in working order or fit for purpose. You are advised to obtain verification from your solicitor or surveyor. References to the tenure of a property are based on information supplied by the seller. We have not had sight of the title documents and a buyer is advised to obtain verification from their solicitor. Items shown in photographs are not included unless specifically mentioned within the sales particulars, but may be available by separate negotiation. We advise you to book an appointment to view before embarking on any journey to see a property, and check its availability.



## in brief...

- Four Bedroom
- Detached Bungalow
- Extended
- Off Street Parking
- Private Rear Garden
- Double Glazed / Gas Central Heating



## the location...

### nearest stations ...

Greenford Central Line (0.7 miles)  
Northolt Central Line (0.9 miles)  
South Greenford Overground (0.9 miles)

Greenford is a large suburb in the London Borough of Ealing in West London, UK. It was an ancient parish in the historic county of Middlesex. It is 11 miles (18 km) from Charing Cross in Central London.

There are several local primary schools in the area which include Edward Betham Church of England Primary School, Coston Primary School, Ravenor Primary School and Gifford Primary School all with good Ofsted report.

If you have older children there are also local secondary schools some of these include William Perkin Church of England High School, Belvue School and Greenford High School.

