

Leven street, Dumbarton, West
Dunbartonshire



Fixed price
£130,000

SBXPROPERTY
ESTATE & LETTING AGENTS



Email
info@sbproperty.co.uk

Phone
01389 731730

Website
www.sbproperty.co.uk







Description

Well proportioned TWO BEDROOM second Floor flat in the highly popular Castle Quay development built circa 2007 by Turnberry Homes.

Accommodation comprises security entry doorway leading to an immaculately kept close, entrance hallway with storage cupboard. Formal front facing lounge, neutral decor and dual opening window assembly, space for table and chairs. Superb rear facing modern breakfasting kitchen with an excellent range of wall and base mounted units. Integrated oven, gas hob and hood. Washing machine and standalone fridge/freezer. Stainless steel sink and drainer. Space for table and chairs.

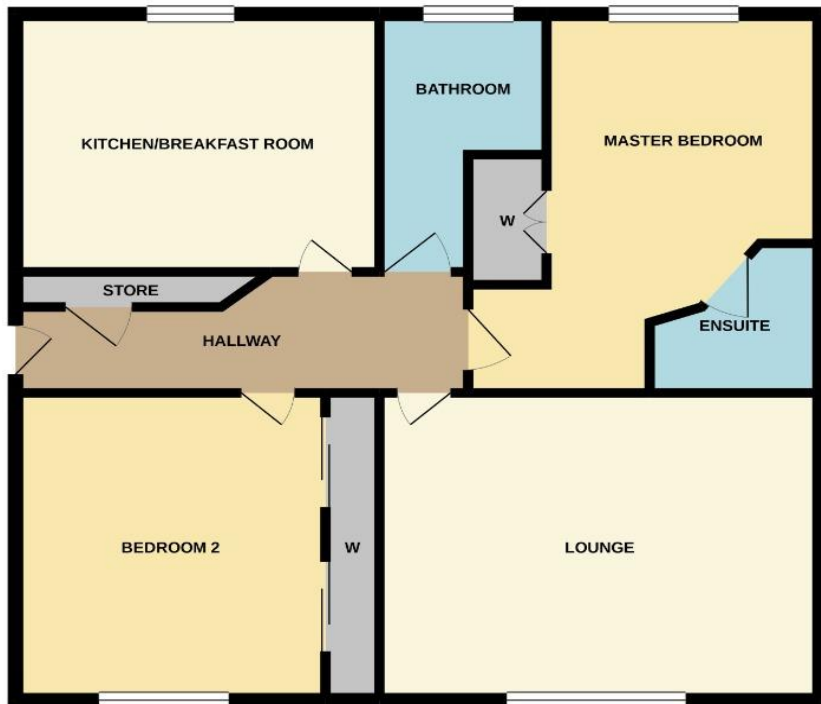
Master bedroom, built in wardrobe assembly with bi-fold doors. En-suite shower room off comprising WC, wash hand basin and shower cubicle with mains shower inset. Second front facing double bedroom with wall length built in wardrobe assembly. Both bedrooms have ample floor area for free standing furniture. Modern fitted bathroom comprising bath with mains shower over, W.C and wash hand basin. Tiled to waist height and emulsion finish to remainder. Further benefits include gas central heating, double glazing, security entry and resident's car parking.

EPCxx

FOR HOME REPORT PLEASE CLICK BELOW ICON



Floorplan & Room Sizes



Lounge/Diner 15ft x 10ft (4.6m x 3m)

kitchen 11ft x 10ft (3.4m x 3m)

Bedroom 1 to Widest point 13ft x 12ft (4m x 3.7m)

En-Suite 6ft x 5ft (1.8m x 1.5m)

Bedroom 2 11ft x 10ft (3.4m x 3m)

Bathroom to Widest Point 10ft x 6ft (3m x 1.8m)







To view a copy of the home report please visit our website www.sbproperty.co.uk

PLEASE NOTE

These property details are set out as a general guideline only. They do not constitute any part of an offer or contract.

MEASUREMENTS: All measurements are taken with an electronic digital measuring device. We strongly advise all prospective purchasers take their own measurements before ordering carpets, blinds, furniture etc. **APPLIANCES:** The electrical, gas powered appliances and heating systems have not been tested as working by us, we recommend that you instruct your own independent evaluation of these. **FIXTURES AND FITTINGS:** All fixtures and fittings mentioned in these particulars are included in the sale. All others in the property are specifically excluded. These particulars are believed to be correct, however their accuracy cannot be guaranteed.

SBXPROPERTY
ESTATE & LETTING AGENTS

Email
info@sbproperty.co

Telephone
01389 731730