



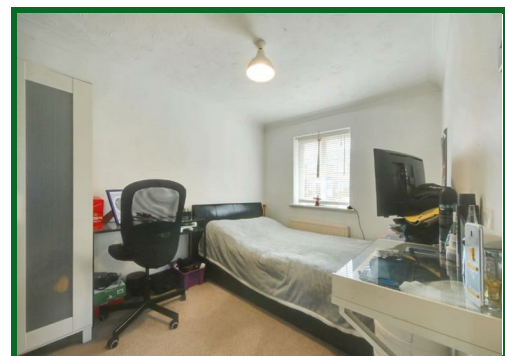
**4 Halliday Close, Shenley
 Herts WD7 9JZ
 Guide Price £475,000**

**** CHAIN FREE**** Welcome to this charming end terrace house located in Halliday Close on Porters Park. Accommodation comprises a spacious and bright living/dining reception room, downstairs WC, fully fitted well planned kitchen, three lovely bedrooms, (two of which are generous doubles) and a modernised family bathroom.

Located close to local amenities, including Shenley Park the property also benefits from two allocated off street parking spaces, a lovely rear garden, has been well maintained and is offered in good decorative order.

Offered CHAIN FREE with motivated vendors, immediate viewing is strongly recommended.
 Please note that there is a service charge of around £33 per month

EPC Rating Band C.



Entrance Hall

Downstairs WC

Kitchen
10' x 7'11 (3.05m x 2.41m)

Lounge Diner
14'10 x 14'8 at max points (4.52m x 4.47m at max points)

Landing

Bedroom One
14'9 into wardrobes x 8'9 (4.50m into wardrobes x 2.67m)

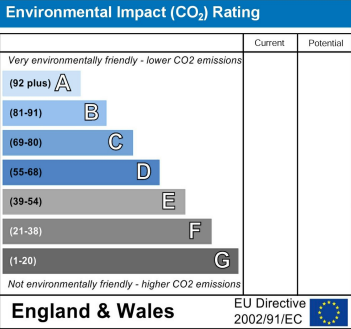
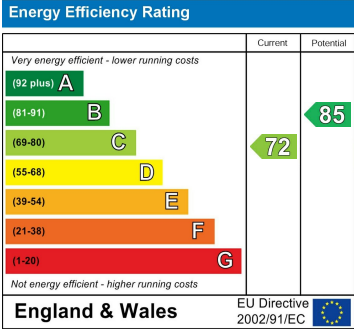
Bedroom Two
11'3 x 7'10 (3.43m x 2.39m)

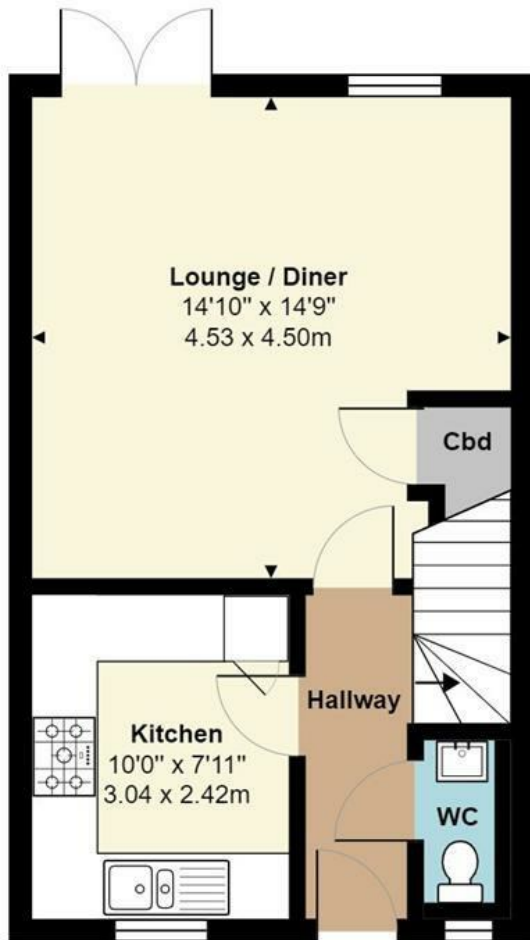
Bedroom Three
9'1 at max points x 6'6 (2.77m at max points x 1.98m)

Bathroom

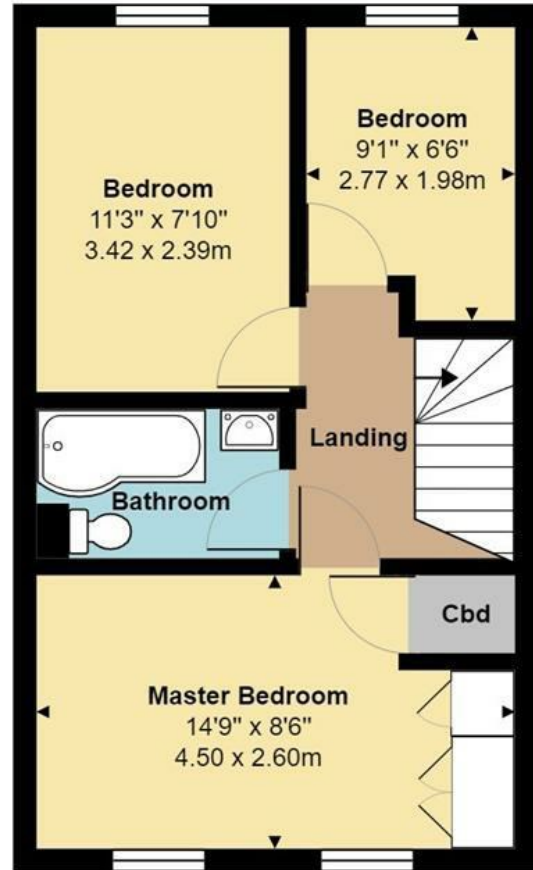
Rear Garden
South-West facing

Parking
Allocated parking for 2 cars





Ground Floor
Area: 375 ft² ... 34.8 m²



First Floor
Area: 375 ft² ... 34.8 m²

Total Area: 749 ft² ... 69.6 m²
All measurements are approximate and for display purposes only

