



10 Trafford Close, Shenley
Hertfordshire WD7 9HU
Guide Price £595,000

Offered for sale is this lovely three bedroom semi-detached house located in the Salisbury Gate part of Porters Park. Well maintained and offered in excellent decorative order, accommodation comprises three bedrooms, family bathroom, downstairs wc, spacious living room, open plan living and dining kitchen with access to the garage (currently used as storage, gym and utility space).

The property also benefits from a driveway and lovely rear garden.

EPC Rating Band D.



Entrance Hall

Downstairs WC

Lounge
14'8 x 9'1 (4.47m x 2.77m)

Kitchen/Dining/Living Area
18'7 x 15' at max points (5.66m x 4.57m at max points)

Utility Room/Office
16'10 x 7'9 (5.13m x 2.36m)
Formally garage.

Landing

Bedroom One
13'8 into wardrobes x 8'5 (4.17m into wardrobes x 2.57m)

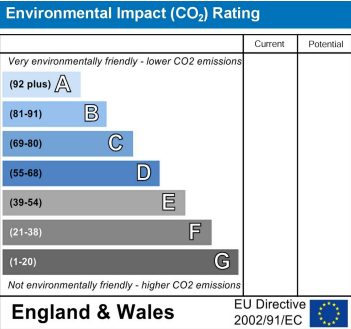
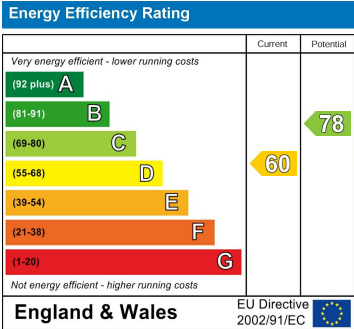
Bedroom Two
9'11 x 8'5 (3.02m x 2.57m)

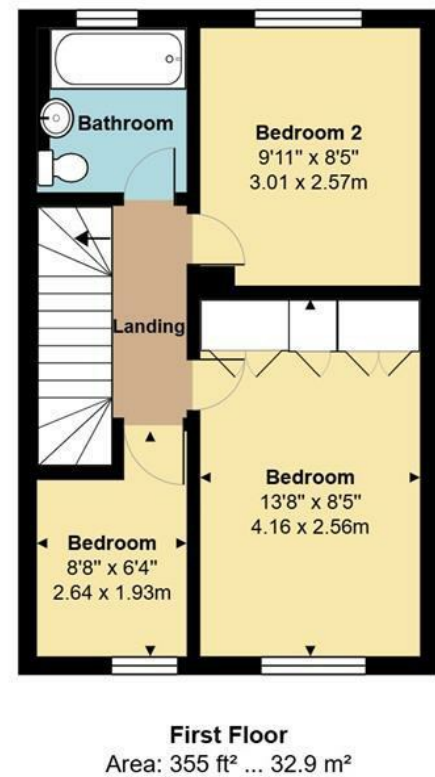
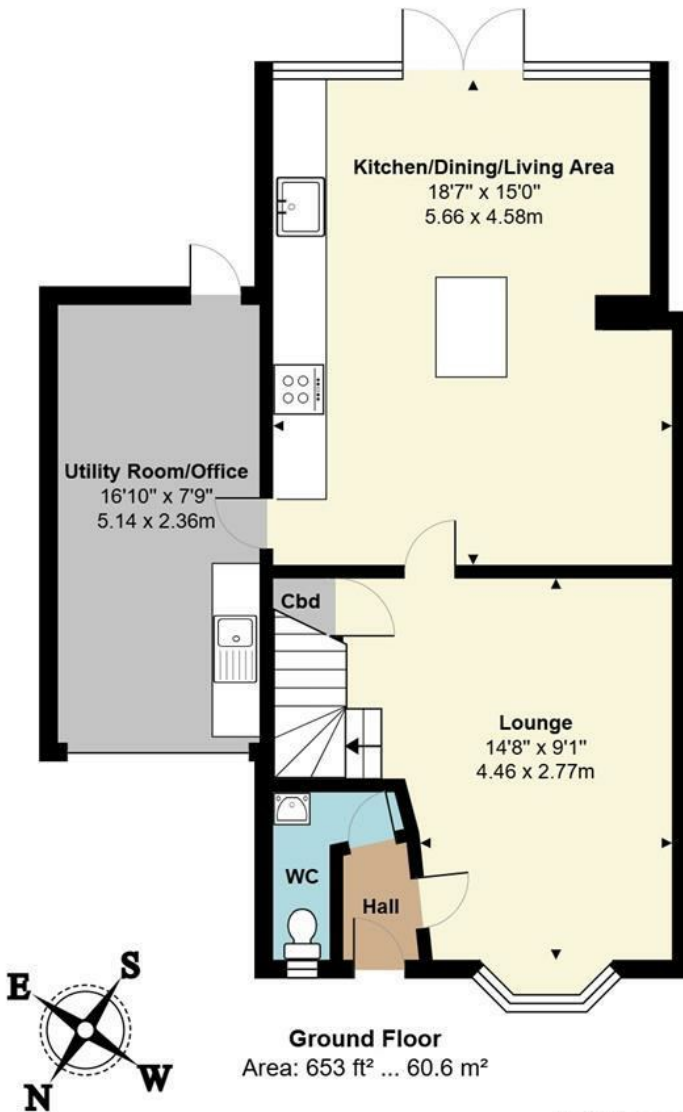
Bedroom Three
8'8 x 6'4 at max points (2.64m x 1.93m at max points)

Family Bathroom

Rear Garden

Parking
Driveway for one car in front of the property





Total Area: 1007 ft² ... 93.6 m²
All measurements are approximate and for display purposes only