



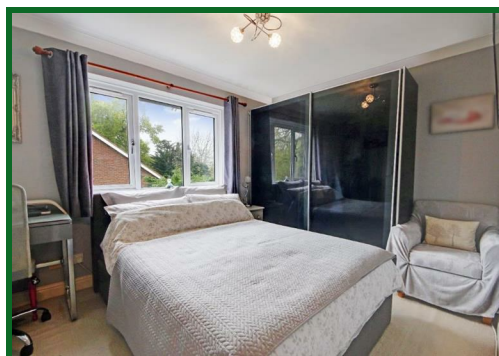
2 Whitebeam Close, Shenley
Herts WD7 9LE
Guide Price £440,000

Offered for sale is this fantastic two bedroom house located at the very top end of Porters Park. A stones throw from Shenley Park and the local shop and other local amenities, this property is well appointed for all that Shenley has to offer.

Accommodation comprises two double bedrooms, family bathroom, spacious living room and bright kitchen diner. This lovely home also benefits from a south facing garden and allocated off street parking for two cars.

Viewing is strongly recommended.

EPC Rating Band C.



Front Porch

Lounge

17'7 x 12'1 at max points (5.36m x 3.68m at max points)

Kitchen Diner

12'1 x 8'10 (3.68m x 2.69m)

Landing

Bedroom One

12'1 x 8'10 (3.68m x 2.69m)

Bedroom Two

12'1 x 8'5 (3.68m x 2.57m)

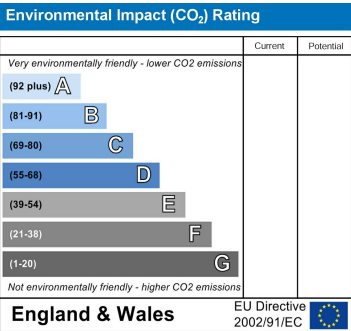
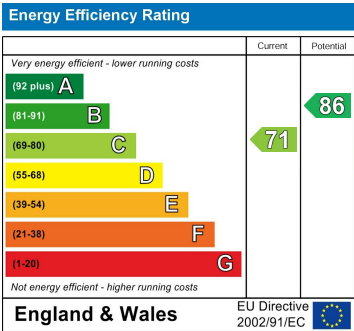
Bathroom

Rear Garden

South Facing

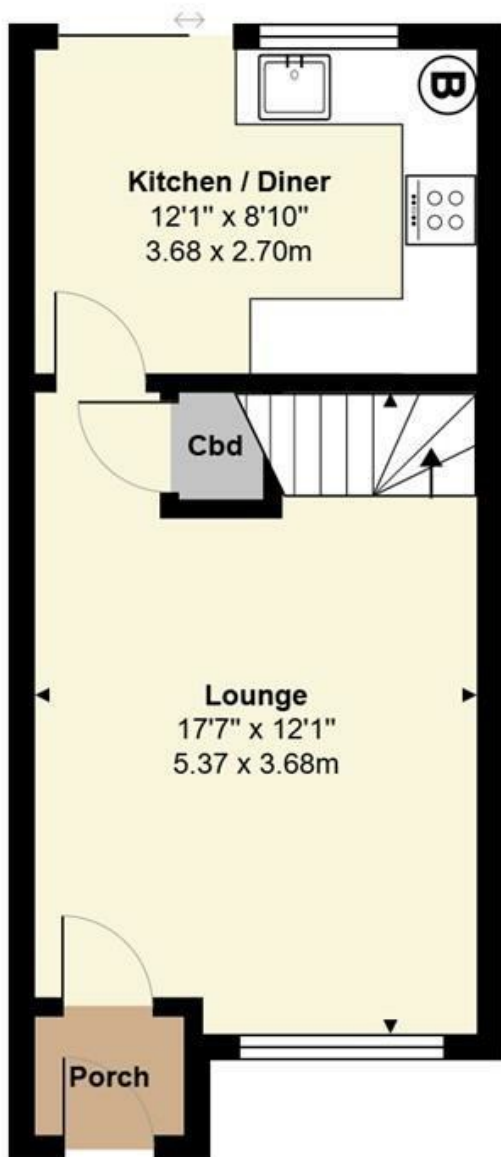
Parking

2 allocated parking bays to the side of the property

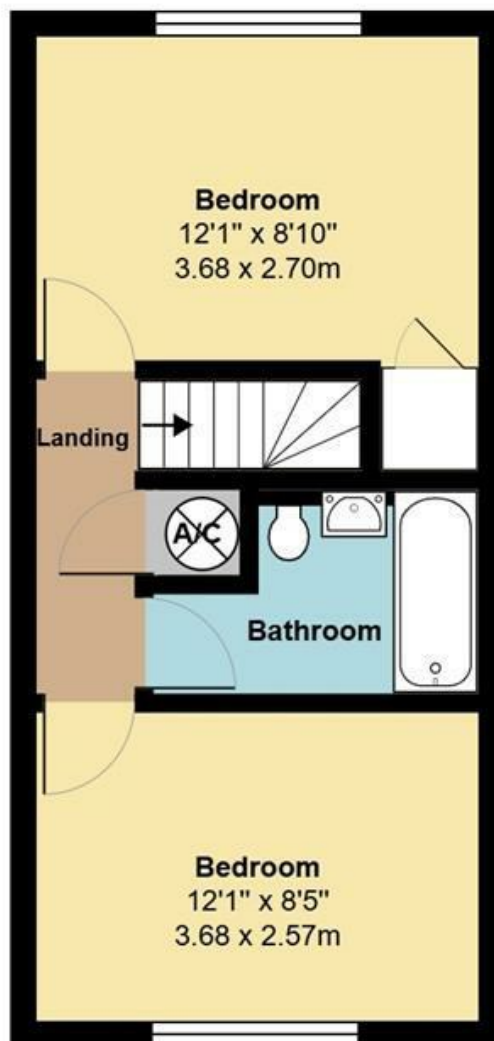


20 Andrew Close, Shenley | Herts WD7 9LP
Tel: 01923 856464 | Email: info@shenleyestates.com





Ground Floor
Area: 336 ft² ... 31.2 m²



First Floor
Area: 325 ft² ... 30.2 m²

Total Area: 661 ft² ... 61.4 m²
All measurements are approximate and for display purposes only

