



**4 Raphael Close, Shenley
 Hertfordshire WD7 9JG
 Guide Price £625,000**

Offered for sale and available CHAIN FREE, is this lovely three bedroom detached house located in a quiet close in Porters Park. In need of modernisation throughout, this property is one of the larger style three bedroom houses, accommodation comprises three bedrooms (two doubles, one single), family bathroom, ensuite shower room, downstairs cloakroom, spacious lounge diner and kitchen with space for table. The property also benefits from a garage and driveway for two cars and lovely well maintained garden.

EPC Rating: C.



Entrance Hall

Downstairs WC

Lounge Diner
22'5 x 10'11 (6.83m x 3.33m)

Kitchen Breakfast Room
13'10 x 9'4 (4.22m x 2.84m)

Landing

Master Bedroom
12'4 to front of wardrobes x 11'2 (3.76m to front of wardrobes x 3.40m)

En-Suite Shower Room

Bedroom Two
11'2 x 8'10 max (3.40m x 2.69m max)

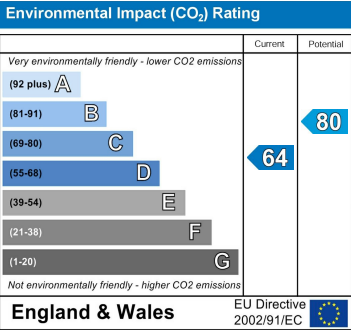
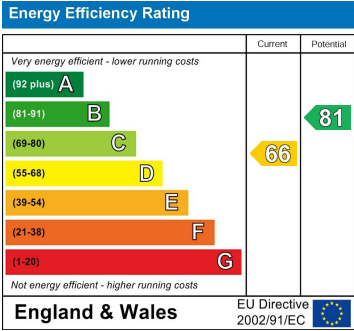
Bedroom Three
9'4 x 6'5 (2.84m x 1.96m)

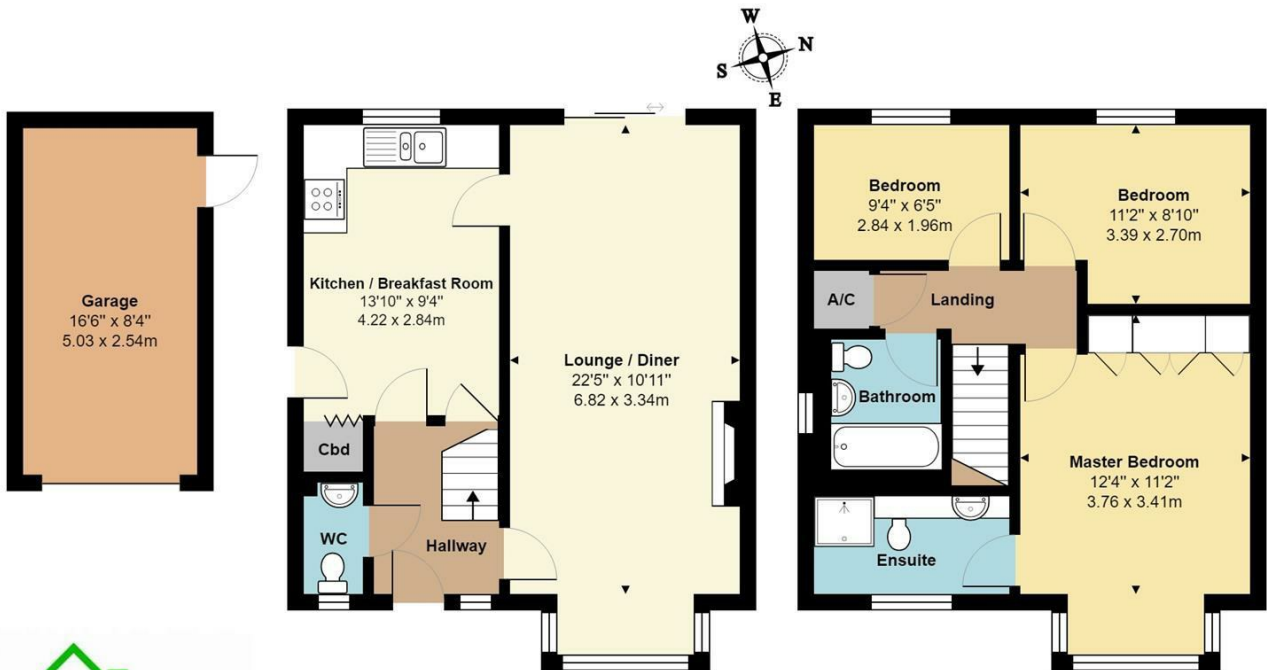
Family Bathroom

Rear Garden

Front Garden

Single Garage & Parking
16'6 x 8'4 (5.03m x 2.54m)
Driveway for 2 cars in front of single garage.





Ground Floor
Area: 484 ft² ... 45.0 m²

First Floor
Area: 484 ft² ... 45.0 m²

Total Area: 968 ft² ... 89.9 m² (Excluding Garage)
All measurements are approximate and for display purposes only

