



**17 Harris Lane, Shenley
Hertfordshire WD7 9ED
£1,800 Per Month**

Offered for rent and available October 2024 is this truly lovely two double bedroom character cottage located on one of the village's prime roads in close proximity to all local amenities.

Accommodation comprises two double bedrooms, one with ensuite wc, two spacious reception rooms, fully fitted kitchen and (downstairs) bathroom.

Located in the heart of the village, the property also benefits from a driveway to the front, sunny aspect garden to the rear and is offered In good decorative order.

Immediate viewing is strongly recommended.

EPC Rating Band D



Lounge

11'11" x 11'5" at max points (3.63m x 3.48m at max points)

Dining Room

11'11" x 11'5" at max points (3.63m x 3.48m at max points)

Kitchen

8'1" x 7'3" (2.46m x 2.21m)

Bathroom

Bedroom One

11'11" x 11'6" at max points (3.63m x 3.51m at max points)

WC

Bedroom Two

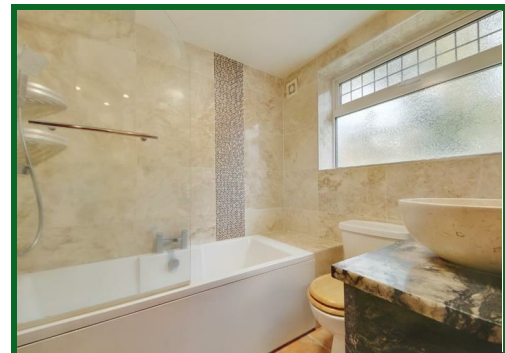
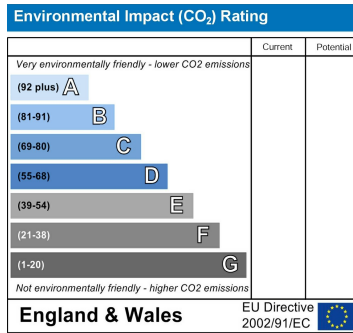
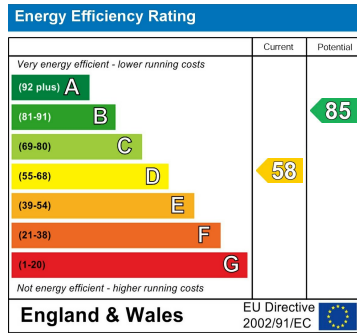
11'11" x 11'6" at max points (3.63m x 3.51m at max points)

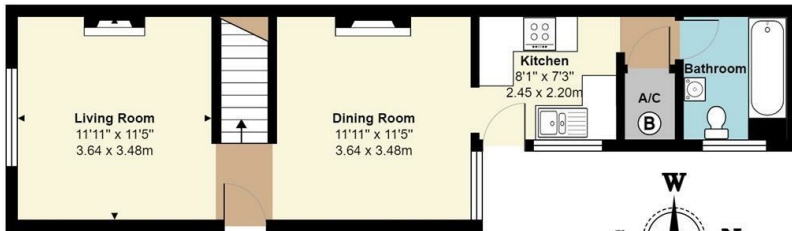
Rear Garden

Accessed from kitchen. West facing with patio and lawn, gated side access & shed.

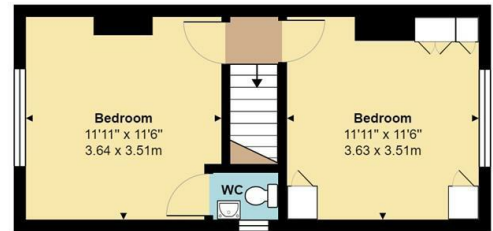
Parking

Driveway for 2 cars in front of the property.





Ground Floor
Area: 454 ft² ... 42.1 m²



First Floor
Area: 319 ft² ... 29.6 m²



Total Area: 773 ft² ... 71.8 m²
All measurements are approximate and for display purposes only



20 Andrew Close, Shenley | Herts WD7 9LP
Tel: 01923 856464 | Email: info@shenleyestates.com

